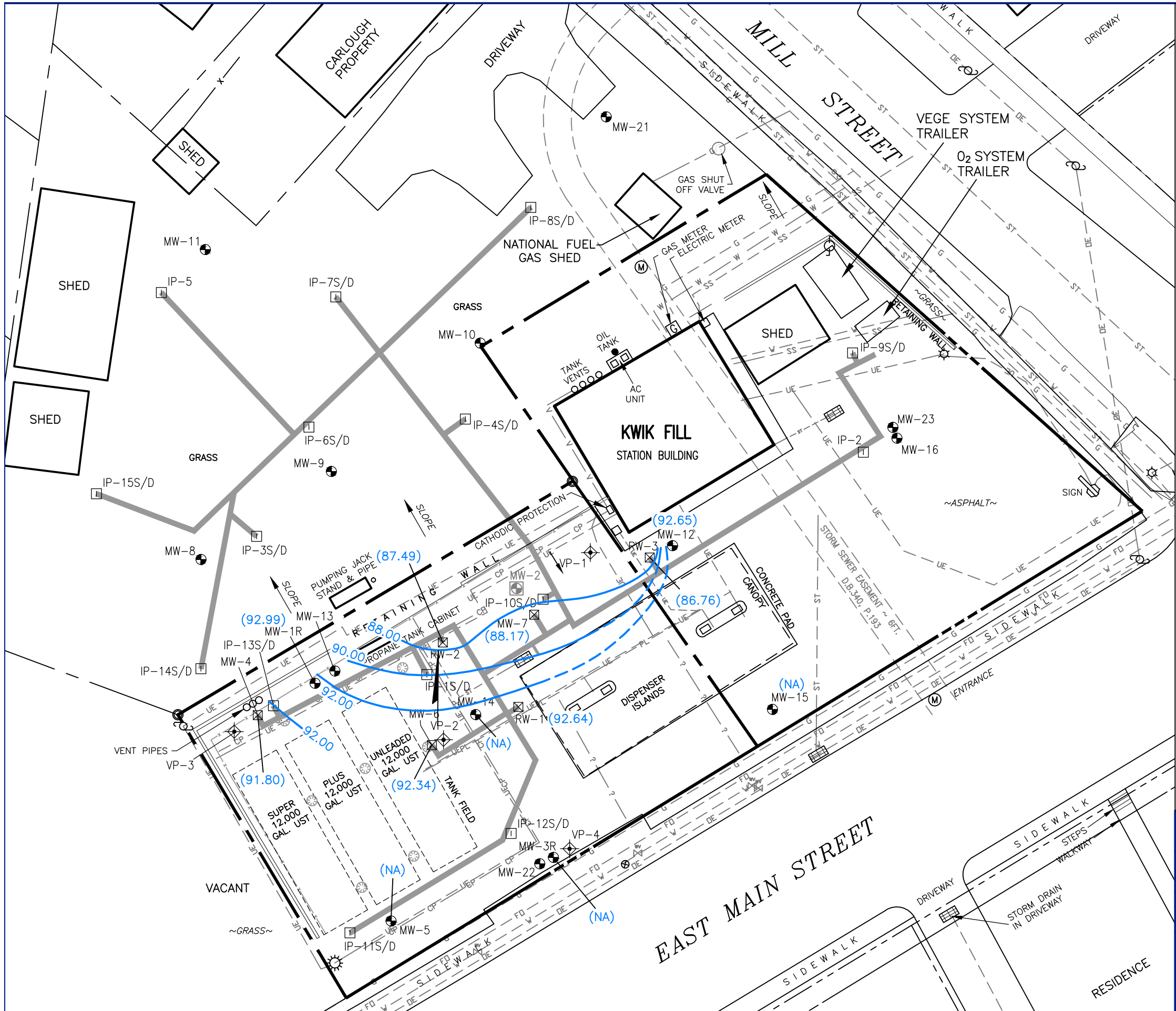


M:\Graphics\0700-Pittsburgh\URC\Kwik Fill\M-061 Bradford SM(New).dwg, B(20), 1/27/2017 9:55:33 AM, wwesterlund



LEGEND

- PROPERTY BOUNDARY (APPROXIMATE)
- x- FENCE
- CATCH BASIN
- UTILITY MANHOLE
- UTILITY POLE
- LIGHT POLE
- WATER VALVE
- DISPENSER ISLAND
- GROUNDWATER MONITORING WELL
- ABANDONED GROUNDWATER MONITORING WELL
- HISTORICAL SOIL VAPOR EXTRACTION WELL
- SOIL GAS MONITORING POINT
- INJECTION POINT
- RECOVERY WELL
- PL --- PRODUCT LINE
- V --- VENT LINE
- DE --- OVERHEAD ELECTRIC LINE
- UE --- UNDERGROUND ELECTRIC LINE
- CP --- UNDERGROUND CATHODIC PROTECTION LINE
- SS --- UNDERGROUND SANITARY SEWER LINE
- ST --- UNDERGROUND STORM SEWER LINE
- FD --- UNDERGROUND FIBER OPTIC LINE
- W --- UNDERGROUND WATER LINE
- G --- UNDERGROUND NATURAL GAS LINE
- ? --- UNKNOWN UTILITY LINE
- REMEDIAL SYSTEM TRENCH
- (92.65) GROUNDWATER ELEVATION (feet)
- 92.00 GROUNDWATER CONTOUR (feet)
- DASHED WHERE INFERRED
- APPARENT GROUNDWATER FLOW DIRECTION
- CONTOUR INTERVAL 2.00 (feet)
- (NA) NOT AVAILABLE

NOTES:

1) MONITORING WELLS MW-8 THROUGH MW-11, MW-13, AND MW-21 THROUGH MW-24 MONITOR THE OVERBURDEN AQUIFER AND WERE NOT USED TO GENERATE GROUNDWATER CONTOURS.

2) THE STORM SEWER CREATES AN APPARENT GROUNDWATER BARRIER RESULTING IN A SIGNIFICANT DIFFERENCE IN GROUNDWATER ELEVATIONS ON THE NORTH SIDE OF THE SITE. THEREFORE, ELEVATION DATA FROM MONITORING WELL MW-16 WAS NOT USED TO GENERATE GROUNDWATER CONTOURS.

3) ACTIVE SYSTEM WELLS: RW-1, RW-2, & RW-3.

DRAFTED BY:	WAW	GROUNDWATER CONTOUR MAP (PERCHED GROUNDWATER ZONE) DEC 16, 2016		
CHECKED BY:	JH	KWIK FILL STATION #M-061 227 EAST MAIN STREET BRADFORD, PENNSYLVANIA		
REVIEWED BY:	EL	Groundwater & Environmental Services, Inc. 301 COMMERCE PARK DRIVE, CRANBERRY TOWNSHIP, PA 16066		
NORTH		SCALE IN FEET	DATE	FIGURE
			1-24-17	1