



Letterle & Associates, Inc.
2022 Axemann Road, Suite 201
Bellefonte, Pennsylvania 16823

Project: Sohail's Store

Location: 835 S. Eisenhower Blvd., Middletown, PA 17057

Client: Sohail Riarh

Drill Date(s): May 26, 2020

Soil Boring SB-1

DEPTH (feet)	DESCRIPTION	SAMPLES				PID (ppm)			DETAILS
		Number	Type	Recovery	Blows (per 6-inches)	0	1,000	2,000	
0	Concrete								
1									
2	Pea Gravel	1	MC						
3									
4						18.2			
5	Pea gravel, wet, odor								
6									
7		2	MC						
8						145.0			
9									
10	CL: Sandy clay, gray					78.7			
11	Clay, tight, tan/gray								
12	SW: Sand, well graded, mod., saturated, gray green	*3	MC			715.1			Sampled @ 12-13'
13	CL: Clay, tight, gray/orange/tan								
14						468.0			
15	Sandy clay, wet, brown, some silt, odor					32.0			
16									
17	Silty clay, brown/red, moist, some gravel, odor	*4	MC			958.2			Sampled @ 17-18'
18	Saturated silty clay, brown, odor								
19						340.5			
20	Borehole Terminated @ 20'								

Total Depth: 20 feet

Drilled By: Eichelbergers, Inc.

Surface Elevation: NA

Borehole Diameter: 2-inch

Logged By: C. Illig

Drill Method: Geoprobe

* Sample Submitted for Laboratory Analysis

Sheet: 1 of 1



Letterle & Associates, Inc.
2022 Axemann Road, Suite 201
Bellefonte, Pennsylvania 16823

Project: Sohail's Store

Location: 835 S. Eisenhower Blvd., Middletown, PA 17057

Client: Sohail Riarh

Drill Date(s): May 26, 2020

Soil Boring SB-2

DEPTH (feet)	DESCRIPTION	SAMPLES				PID (ppm)	DETAILS
		Number	Type	Recovery	Blows (per 6-inches)		
0	Asphalt: Gravel subbase						
1							
2	CL: Tight silty clay, brown/red to gray, no odor/staining, dry	1	MC			1.3	
3							
4						4.6	
5	Clay, soft, brown/tan, slightly moist, odor						
6						77.4	
7							
8						390.2	
9	SW: Sand, mod, some gravel fragments, moist, tan/brown, odor	*2	MC				Sampled @ 9-10'
10	CL: Clay, tight, gray/orange, wet, odor					834.4	
11							
12						429.1	
13	SW: Sand, wet						
14	CL: Sandy and silty clay, gray/brown	*3	MC				Sampled @ 14-15'
15	Borehole Terminated @ 15'					729.0	
16							
17							
18							
19							
20							

Total Depth: 15 feet

Borehole Diameter: 2-inch

Drill Method: Geoprobe

Drilled By: Eichelbergers, Inc.

Logged By: C. Illig

* Sample Submitted for Laboratory Analysis

Surface Elevation: NA

Sheet: 1 of 1



Letterle & Associates, Inc.
2022 Axemann Road, Suite 201
Bellefonte, Pennsylvania 16823

Project: Sohail's Store

Location: 835 S. Eisenhower Blvd., Middletown, PA 17057

Client: Sohail Riarh

Drill Date(s): May 26, 2020

Soil Boring **SB-3**

DEPTH (feet)	DESCRIPTION	SAMPLES				PID (ppm)	DETAILS
		Number	Type	Recovery	Blows (per 6-inches)		
0	Asphalt: Gravel subbase						
1							
2	CL: Silty clay, some gray gravel, brown/red, dry, no odor/staining	1	MC			0.9	
3							
4						1.0	
5	Tight clay, brown, slight odor, slightly moist						
6						5.0	
7		2	MC			47.7	
8							
9	SW: Sand, wet, tan/brown, odor					2.9	
10							
11	CL: Clay, tight, red/gray, dry					12.3	
12							
13	SW: Sand, mod., some clay, well graded, gray/red					59.0	
14	CL: Clay, soft, moist, brown						
15	Gravelly clay, brown, odor, wet	*3	MC			130.9	Sampled @ 14-15'
16	SW: Saturated sand and clay, brown					11.2	
17						325.1	
18	CL: Gravelly clay, brown/red, wet, strong odor						
19		*4	MC			416.0	Sampled @ 18-19'
20	Borehole Terminated @ 20'						

Total Depth: 20 feet

Borehole Diameter: 2-inch

Drill Method: Geoprobe

Drilled By: Eichelbergers, Inc.

Logged By: C. Illig

Surface Elevation: NA

* Sample Submitted for Laboratory Analysis

Sheet: 1 of 1



Letterle & Associates, Inc.
2022 Axemann Road, Suite 201
Bellefonte, Pennsylvania 16823

Project: Sohail's Store

Location: 835 S. Eisenhower Blvd., Middletown, PA 17057

Client: Sohail Riarh

Drill Date(s): May 26, 2020

Soil Boring SB-4

DEPTH (feet)	DESCRIPTION	SAMPLES				PID (ppm)	DETAILS
		Number	Type	Recovery	Blows (per 6-inches)		
0	Asphalt: Subbase						
1							
2	GW: Pea Gravel, saturated	1	MC				
3							
4							
5	No Recovery						
6							
7							
8							
9	SW: Sand, tan/gray/black, saturated, odor	*2	MC			343.3	Sampled @ 9-10'
10						411.0	
11	CL: Clay, tight, moist, tan/red						
12						59.6	
13							
14	SW: Sand, gray, strong odor, wet	*3	MC	100%		759.0	Sampled @ 14-15'
15	Borehole Terminated @ 15'						
16							
17							
18							
19							
20							

Total Depth: 15 feet

Borehole Diameter: 2-inch

Drill Method: Geoprobe

Drilled By: Eichelbergers, Inc.

Logged By: C. Illig

Surface Elevation: NA

* Sample Submitted for Laboratory Analysis

Sheet: 1 of 1



Letterle & Associates, Inc.
2022 Axemann Road, Suite 201
Bellefonte, Pennsylvania 16823

Project: Sohail's Store

Location: 835 S. Eisenhower Blvd., Middletown, PA 17057

Client: Sohail Riarh

Drill Date(s): May 26 - 27, 2020

Soil Boring SB-5

DEPTH (feet)	DESCRIPTION	SAMPLES				PID (ppm)	DETAILS
		Number	Type	Recovery	Blows (per 6-inches)		
0	Asphalt: Gravel subbase						
1						1.7	
2	CL: Silty clay, brown/red/gray, some gravel fragments	1	MC				
3						1.1	
4	Moist @ 4'						
5	Clay brown/red, stiff, some sand					3.9	
6						1.3	
7							
8						15.2	
9	SW: Sand, wet, gray, odor	*2	MC			888.0	Sampled @ 9-10'
10	CL: Clay, tight, slightly moist, tan/gray/red, odor						
11						680.0	
12		3					
13						18.8	
14	Sandy, silty clay, gray, odor, wet						
15	Borehole Terminated @ 15'					605.0	
16							
17							
18							
19							
20							

Total Depth: 15 feet

Drilled By: Eichelbergers, Inc.

Surface Elevation: NA

Borehole Diameter: 2-inch

Logged By: C. Illig

Drill Method: Geoprobe

* Sample Submitted for Laboratory Analysis

Sheet: 1 of 1



Letterle & Associates, Inc.
2022 Axemann Road, Suite 201
Bellefonte, Pennsylvania 16823

Project: Sohail's Store

Location: 835 S. Eisenhower Blvd., Middletown, PA 17057

Client: Sohail Riarh

Drill Date(s): May 26, 2020

Soil Boring SB-6

DEPTH (feet)	DESCRIPTION	SAMPLES				PID (ppm)	DETAILS
		Number	Type	Recovery	Blows (per 6-inches)		
0	Concrete						
1							
2	GW: Pea gravel	1	MC	20%			
3							
4							
5	Pea gravel, saturated						
6							
7		2	MC	10%		30.4	
8							
9							
10							
11							
12	CL: Saturated, sandy clay, gray/tan, stiff, odor					3.7	
13							
14							
15	SW: Sand, gray, odor, saturated Borehole Terminated @ 15'	*3	MC	60%		555.0	Sampled @ 14-15'
16							
17							
18							
19							
20							

Total Depth: 15 feet

Borehole Diameter: 2-inch

Drill Method: Geoprobe

Drilled By: Eichelbergers, Inc.

Logged By: C. Illig

Surface Elevation: NA

* Sample Submitted for Laboratory Analysis

Sheet: 1 of 1



Letterle & Associates, Inc.
2022 Axemann Road, Suite 201
Bellefonte, Pennsylvania 16823

Project: Sohail's Store

Location: 835 S. Eisenhower Blvd., Middletown, PA 17057

Client: Sohail Riarh

Drill Date(s): May 26, 2020

Soil Boring SB-7

DEPTH (feet)	DESCRIPTION	SAMPLES				PID (ppm)	DETAILS
		Number	Type	Recovery	Blows (per 6-inches)		
0	Asphalt: Gravel subbase						
1						0.2	
2	CL: Clay, tight, brown/red, no odor/staining, slightly moist	1	MC			7.4	
3						1.2	
4						0.6	
5						8.5	
6						5.0	
7						9.8	
8						266.0	
9	SW: Sand, wet, gray/brown, odor	*2	MC				Sampled @ 9-10'
10							
11	CL: Silty clay, gray/brown, slight odor, moist						
12							
13							
14							
15	SW: Sand, brown/gray, wet, odor Borehole Terminated @ 15'	*3	MC				Sampled @ 14-15'
16							
17							
18							
19							
20							

Total Depth: 15 feet

Borehole Diameter: 2-inch

Drill Method: Geoprobe

Drilled By: Eichelbergers, Inc.

Logged By: C. Illig

Surface Elevation: NA

* Sample Submitted for Laboratory Analysis

Sheet: 1 of 1



Letterle & Associates, Inc.
2022 Axemann Road, Suite 201
Bellefonte, Pennsylvania 16823

Project: Sohail's Store

Location: 835 S. Eisenhower Blvd., Middletown, PA 17057

Client: Sohail Riarh

Drill Date(s): May 26, 2020

Soil Boring SB-8

DEPTH (feet)	DESCRIPTION	SAMPLES				PID (ppm)			DETAILS
		Number	Type	Recovery	Blows (per 6-inches)	0	1,000	2,000	
0	Concrete								
1									
2	GW: Pea gravel	1	MC	10%					
3									
4									
5	No Recovery								
6									
7									
8		2	MC						
9									
10	Pea gravel, saturated								
11									
12									
13	CL: Saturated, clay, gray, odor	*3	MC						
14	SW: Sand, mod., saturated, gray, odor								Sampled @ 13-14'
14	CL: Clay, stiff, gray/tan								
15	Borehole Terminated @ 15'								
16									
17									
18									
19									
20									

Total Depth: 15 feet

Borehole Diameter: 2-inch

Drill Method: Geoprobe

Drilled By: Eichelbergers, Inc.

Logged By: C. Illig

* Sample Submitted for Laboratory Analysis

Surface Elevation: NA

Sheet: 1 of 1



Letterle & Associates, Inc.
2022 Axemann Road, Suite 201
Bellefonte, Pennsylvania 16823

Project: Sohail's Store

Location: 835 S. Eisenhower Blvd., Middletown, PA 17057

Client: Sohail Riarh

Drill Date(s): May 26, 2020

Soil Boring SB-9

DEPTH (feet)	DESCRIPTION	SAMPLES				PID (ppm)	DETAILS
		Number	Type	Recovery	Blows (per 6-inches)		
0	Concrete						
1							
2	CL: Silty clay, brown, stiff, odor	1	MC			13.7	
3							
4	GM: Gravelly silt, black, strong odor, clay @ 5'					767.0	
5	CL: Clay, brown, trace silt, soft, odor					364.0	
6						107.0	
7		2	MC			117.7	
8							
9						23.7	
10	Clay, soft, slightly moist, odor, gray					221.0	
11							Sampled @ 11-12'
12		*3	MC			263.2	
13							
14	SW: Sand @ 15', very strong odor, orange	*4					Sampled @ 14-15'
15	Borehole Terminated @ 15'					1,032.0	
16							
17							
18							
19							
20							

Total Depth: 15 feet

Borehole Diameter: 2-inch

Drill Method: Geoprobe

Drilled By: Eichelbergers, Inc.

Logged By: C. Illig

* Sample Submitted for Laboratory Analysis

Surface Elevation: NA

Sheet: 1 of 1



Letterle & Associates, Inc.
2022 Axemann Road, Suite 201
Bellefonte, Pennsylvania 16823

Project: Sohail's Store

Location: 835 S. Eisenhower Blvd., Middletown, PA 17057

Client: Sohail Riarh

Drill Date(s): May 26, 2020

Soil Boring SB-10

DEPTH (feet)	DESCRIPTION	SAMPLES				PID (ppm)			DETAILS
		Number	Type	Recovery	Blows (per 6-inches)	0	1,000	2,000	
0	Concrete								
1									
2	GW: Pea gravel	1	MC	10%					
3									
4									
5									
6		2	MC	10%					
7									
8									
9									
10	No Recovery								
11									
12		3	MC	0%					
13									
14									
15	CL: Saturated, gravelly clay, brown/red, odor								
16									
17		*4	MC	72%					Sampled @ 15-20'
18									
19	SW: Black stained sand, coarse								
20	Borehole Terminated @ 20'								

Total Depth: 20 feet

Drilled By: Eichelbergers, Inc.

Surface Elevation: NA

Borehole Diameter: 2-inch

Logged By: C. Illig

Drill Method: Geoprobe

* Sample Submitted for Laboratory Analysis

Sheet: 1 of 1



Letterle & Associates, Inc.
2022 Axemann Road, Suite 201
Bellefonte, Pennsylvania 16823

Project: Sohail's Store

Location: 835 S. Eisenhower Blvd., Middletown, PA 17057

Client: Sohail Riarh

Drill Date(s): May 27, 2020

Soil Boring SB-11

DEPTH (feet)	DESCRIPTION	SAMPLES				PID (ppm)			DETAILS
		Number	Type	Recovery	Blows (per 6-inches)	0	1,000	2,000	
0	Asphalt: Gravel subbase								Sampled @ 4-5'
1									
2	GW: Silty clay, red brown, dry, large cobbles/brick					1.1			
3									
4	CL: Black silty clay, dry, odor					7.9			
5		*1	AK			104.4			
6	Clay, tight, brown, slightly moist, no odor					9.7			
7						0.3			
8		2	MC	100%					
9									
10	Moist @ 9.5', sandy clay, brown/gray					10.4			
11	Sandy clay, light brown/gray, moist, odor					59.2			
12						6.4			
13	Gray/tan clay, tight, slightly moist	3	MC	80%					
14									
15	Clayey, silty sand, moist, gray, odor Borehole Terminated @ 15'					45.5			
16									
17									
18									
19									
20									

Total Depth: 15 feet

Borehole Diameter: 2-inch

Drill Method: Geoprobe

Drilled By: Eichelbergers, Inc.

Logged By: C. Illig

* Sample Submitted for Laboratory Analysis

Surface Elevation: NA

Sheet: 1 of 1



Letterle & Associates, Inc.
2022 Axemann Road, Suite 201
Bellefonte, Pennsylvania 16823

Project: Sohail's Store

Location: 835 S. Eisenhower Blvd., Middletown, PA 17057

Client: Sohail Riarh

Drill Date(s): May 28, 2020

Soil Boring SB-12

DEPTH (feet)	DESCRIPTION	SAMPLES				PID (ppm)	DETAILS
		Number	Type	Recovery	Blows (per 6-inches)		
0	Asphalt: Gravel subbase						
1	CL: Silty clay, brown, some gravel, no odor/staining, slightly moist	1	MC			1.5	Sampled @ 10-11'
2						3.8	
3							
4							
5	Silty clay, orange/gray, slightly moist, plastic, trace odor	2	MC			1.1	
6							
7							
8	Sandy clay, gray, moist, slight odor	*3	MC			1.4	
9						15.9	
10							
11	Silty clay, gray, slight odor, moist					0.0	
12						0.0	
13							
14	Borehole Terminated @ 15'						
15							
16							
17							
18							
19							
20							

Total Depth: 15 feet

Borehole Diameter: 2-inch

Drill Method: Geoprobe

Drilled By: Eichelbergers, Inc.

Logged By: C. Illig

* Sample Submitted for Laboratory Analysis

Surface Elevation: NA

Sheet: 1 of 1



Letterle & Associates, Inc.
2022 Axemann Road, Suite 201
Bellefonte, Pennsylvania 16823

Project: Sohail's Store

Location: 835 S. Eisenhower Blvd., Middletown, PA 17057

Client: Sohail Riarh

Drill Date(s): May 28, 2020

Soil Boring SB-13

DEPTH (feet)	DESCRIPTION	SAMPLES				PID (ppm)			DETAILS
		Number	Type	Recovery	Blows (per 6-inches)	0	1,000	2,000	
0	Asphalt: Gravel subbase								
1									
2	GW: Silty clay, orange, no odor, dry	1	MC			0.0			
3									
4	CL: Brown/gray silty clay, soft, slight odor					3.4			
5	Brown/orange clay, some silt, some sand, slight odor, dry								
6									
7		*2	MC			67.9			
8						0.0			Sampled @ 7-8'
9	SW: Sand, wet, gray/tan, odor								
10	CL: Clay, gray/orange, soft								
11						0.3			
12	Clay, soft, gray, no odor, moist	3	MC						
13									
14						6.8			
15	Borehole Terminated @ 15'								
16									
17									
18									
19									
20									

Total Depth: 15 feet

Borehole Diameter: 2-inch

Drill Method: Geoprobe

Drilled By: Eichelbergers, Inc.

Logged By: C. Illig

* Sample Submitted for Laboratory Analysis

Surface Elevation: NA

Sheet: 1 of 1



Letterle & Associates, Inc.
2022 Axemann Road, Suite 201
Bellefonte, Pennsylvania 16823

Project: Sohail's Store

Location: 835 S. Eisenhower Blvd., Middletown, PA 17057

Client: Sohail Riarh

Drill Date(s): May 28, 2020

Soil Boring SB-14

DEPTH (feet)	DESCRIPTION	SAMPLES				PID (ppm)	DETAILS
		Number	Type	Recovery	Blows (per 6-inches)		
0	Concrete						
1							
2	CL: Silty clay, orange/brown					14.7	
3							
4						385.0	
5	Odor and moist @ 4.5'	*1	MC				Sampled @ 4-5'
6	Clay, orange/brown, soft, slightly moist, slight odor					15.5	
7							
8		2	MC			5.0	
9							
10	SW: Sand, gray, odor, wet					130.0	
11	CL: Clay, orange/gray, tight					215.0	
12		3	MC			10.4	
13	SW: Sand, gray/green staining, odor, wet						
14							
15	Borehole Terminated @ 15'					397.0	
16							
17							
18							
19							
20							

Total Depth: 15 feet

Borehole Diameter: 2-inch

Drill Method: Geoprobe

Drilled By: Eichelbergers, Inc.

Logged By: C. Illig

* Sample Submitted for Laboratory Analysis

Surface Elevation: NA

Sheet: 1 of 1



Letterle & Associates, Inc.
2022 Axemann Road, Suite 201
Bellefonte, Pennsylvania 16823

Project: Sohail's Store

Location: 835 S. Eisenhower Blvd., Middletown, PA 17057

Client: Sohail Riarh

Drill Date(s): May 28, 2020

Soil Boring SB-15

DEPTH (feet)	DESCRIPTION	SAMPLES				PID (ppm)			DETAILS
		Number	Type	Recovery	Blows (per 6-inches)	0	1,000	2,000	
0	Concrete								
1									
2	CL: Silty clay, soft, brown, slightly moist, no odor	1	MC			0.2			
3									
4									
5	Silty clay, brown/orange, tight, odor, slightly moist					3.6			
6						28.7			
7		2	MC						
8						16.3			
9									
10	Sandy clay, gray/orange, odor, moist					146.7			
11						743.0			
12									
13		*3	MC			1,186.0			
14									Sampled @ 13-14'
15	Borehole Terminated @ 15'					1,016.0			
16									
17									
18									
19									
20									

Total Depth: 15 feet

Borehole Diameter: 2-inch

Drill Method: Geoprobe

Drilled By: Eichelbergers, Inc.

Logged By: C. Illig

* Sample Submitted for Laboratory Analysis

Surface Elevation: NA

Sheet: 1 of 1



Letterle & Associates, Inc.
2022 Axemann Road, Suite 201
Bellefonte, Pennsylvania 16823

Project: Sohail's Store

Location: 835 S. Eisenhower Blvd., Middletown, PA 17057

Client: Sohail Riarh

Drill Date(s): May 28, 2020

Soil Boring SB-16

DEPTH (feet)	DESCRIPTION	SAMPLES				PID (ppm)			DETAILS
		Number	Type	Recovery	Blows (per 6-inches)	0	1,000	2,000	
0	Asphalt: Gravel subbase								
1									
2	GW: Silty clay, soft, brown/black, dry, no odor	1	MC			10.8			
3									
4									
5	CL: Silty clay, soft, brown/orange to gray, moist					8.4			
6						9.9			
7									
8						4.3			
9									
10	SW: Sand, gray, moist, odor	*2	MC			153.7			Sampled @ 9-10'
11	CL: Clay, gray, odor, tight, moist					23.9			
12	SW: Sand, gray, mod., well sorted, moist, odor	3				214.0			
13									
14	CL: Orange/gray clay, soft, moist, odor								
15	Borehole Terminated @ 15'					423.0			
16									
17									
18									
19									
20									

Total Depth: 15 feet

Borehole Diameter: 2-inch

Drill Method: Geoprobe

Drilled By: Eichelbergers, Inc.

Logged By: C. Illig

Surface Elevation: NA

* Sample Submitted for Laboratory Analysis

Sheet: 1 of 1



Letterle & Associates, Inc.
2022 Axemann Road, Suite 201
Bellefonte, Pennsylvania 16823

Project: Sohail's Store

Location: 835 S. Eisenhower Blvd., Middletown, PA 17057

Client: Sohail Riarh

Drill Date(s): June 1, 2020

Soil Boring SB-17

DEPTH (feet)	DESCRIPTION	SAMPLES				PID (ppm)	DETAILS
		Number	Type	Recovery	Blows (per 6-inches)		
0	Concrete						
1							
2	CL: Clay, some silt, orange and dark gray, no odor					3.7	
3							
4	Odor @ 4'	*1	MC			41.4	Sampled @ 3-4'
5	Moist @ 5'					0.3	
6	Clay, trace silt, slightly plastic, brown/gray, slightly moist, no odor						
7						0.0	
8		2	MC				
9						0.2	
10						8.7	
11	Sandy clay, some small gravel, gray, slight odor, slightly moist						
12						15.5	
13		3	MC				
14							
15	Orange, same as above Borehole Terminated @ 15'					17.9	
16							
17							
18							
19							
20							

Total Depth: 15 feet

Borehole Diameter: 2-inch

Drill Method: Geoprobe

Drilled By: Eichelbergers, Inc.

Logged By: C. Illig

Surface Elevation: NA

* Sample Submitted for Laboratory Analysis

Sheet: 1 of 1



Letterle & Associates, Inc.
2022 Axemann Road, Suite 201
Bellefonte, Pennsylvania 16823


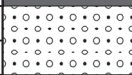



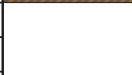


Project: Sohail's Store

Location: 835 S. Eisenhower Blvd., Middletown, PA 17057

Client: Sohail Riarh

Drill Date(s): June 1, 2020

Soil Boring SB-18

DEPTH (feet)	DESCRIPTION	SAMPLES				PID (ppm)			DETAILS
		Number	Type	Recovery	Blows (per 6-inches)	0	1,000	2,000	
0	 Asphalt	1	MC						
1	 GW: Gravel subbase								
2	 CL: Silty clay, soft, slightly moist, brown/black, no odor								
3		2	MC						
4									
5	 Silty clay, soft, brown, no odor								
6		2	MC						
7	 Moist @ 7-8'								
8	 Tight silty clay, gray with brown/orange, no odor, slightly moist								
9		*3	MC						
10	 SM: Sandy silt, trace clay, gray, slightly moist, stale odor								
11									
12		*3	MC						
13									
14									
15	 CL: Sandy clay, with gravel, gray/brown, slightly moist, no odor Borehole Terminated @ 15'								
16									
17									
18									
19									
20									

Total Depth: 15 feet

Borehole Diameter: 2-inch

Drill Method: Geoprobe

Drilled By: Eichelbergers, Inc.

Logged By: C. Illig

* Sample Submitted for Laboratory Analysis

Surface Elevation: NA

Sheet: 1 of 1



Letterle & Associates, Inc.
2022 Axemann Road, Suite 201
Bellefonte, Pennsylvania 16823

Project: Sohail's Store

Location: 835 S. Eisenhower Blvd., Middletown, PA 17057

Client: Sohail Riarrh

Drill Date: May 28, 2020

Monitoring Well MW-1

DEPTH (feet)	DESCRIPTION	SAMPLES				PID (ppm)	WELL CONSTRUCTION DETAILS	
		Number	Type	Recovery	Blows (per 6-inches)			
0	Asphalt: Gravel subbase	1	HSA			<div><div></div><div></div><div></div><div></div><div></div><div></div><div></div><div></div><div></div><div></div><div></div><div></div><div></div><div></div><div></div><div></div><div></div><div></div><div></div><div></div><div></div><div></div><div></div><div></div><div></div><div></div><div></div><div></div><div></div><div></div><div></div><div></div><div></div><div></div><div></div><div></div><div></div><div></div><div></div><div></div><div></div><div></div><div></div><div></div><div></div><div></div><div></div><div></div><div></div><div></div><div></div><div></div><div></div><div></div><div></div><div></div><div></div><div></div><div></div><div></div><div></div><div></div><div></div><div></div><div></div><div></div><div></div><div></div><div></div><div></div><div></div><div></div><div></div><div></div><div></div><div></div><div></div><div></div><div></div><div></div><div></div><div></div><div></div><div></div><div></div><div></div><div></div><div></div><div></div><div></div><div></div><div></div><div></div><div></div><div></div><div></div><div></div><div></div><div></div><div></div><div></div><div></div><div></div><div></div><div></div><div></div><div></div><div></div><div></div><div></div><div></div><div></div><div></div><div></div><div></div><div></div><div></div><div></div><div></div><div></div><div></div><div></div><div></div><div></div><div></div><div></div><div></div><div></div><div></div><div></div><div></div><div></div><div></div><div></div><div></div><div></div><div></div><div></div><div></div><div></div><div></div><div></div><div></div><div></div><div></div><div></div><div></div><div></div><div></div><div></div><div></div><div></div><div></div><div></div><div></div><div></div><div></div><div></div><div></div><div></div><div></div><div></div><div></div><div></div><div></div><div></div><div></div><div></div><div></div><div></div><div></div><div></div><div></div><div></div><div></div><div></div><div></div><div></div><div></div><div></div><div></div><div></div><div></div><div></div><div></div><div></div><div></div><div></div><div></div><div></div><div></div><div></div><div></div><div></div><div></div><div></div><div></div><div></div><div></div><div></div><div></div><div></div><div></div><div></div><div></div><div></div><div></div><div></div><div></div><div></div><div></div><div></div><div></div><div></div><div></div><div></div><div></div><div></div><div></div><div></div><div></div><div></div><div></div><div></div><div></div><div></div><div></div><div></div><div></div><div></div><div></div><div></div><div></div><div></div><div></div><div></div><div></div><div></div><div></div><div></div><div></div><div></div><div></div><div></div><div></div><div></div><div></div><div></div><div></div><div></div><div></div><div></div><div></div><div></div><div></div><div></div><div></div><div></div><div></div><div></div><div></div><div></div><div></div><div></div><div></div><div></div><div></div><div></div><div></div><div></div><div></div><div></div><div></div><div></div><div></div><div></div><div></div><div></div><div></div><div></div><div></div><div></div><div></div><div></div><div></div><div></div><div></div><div></div><div></div><div></div><div></div><div></div><div></div><div></div><div></div><div></div><div></div><div></div><div></div><div></div><div></div><div></div><div></div><div></div><div></div><div></div><div></div><div></div><div></div><div></div><div></div><div></div><div></div><div></div><div></div><div></div><div></div><div></div><div></div><div></div><div></div><div></div><div></div><div></div><div></div><div></div><div></div><div></div><div></div><div></div><div></div><div></div><div></div><div></div><div></div><div></div><div></div><div></div><div></div><div></div><div></div><div></div><div></div><div></div><div></div><div></div><div></div><div></div><div></div><div></div><div></div><div></div><div></div><div></div><div></div><div></div><div></div><div></div><div></div><div></div><div></div><div></div><div></div><div></div><div></div><div></div><div></div><div></div><div></div><div></div><div></div><div></div><div></div><div></div><div></div><div></div><div></div><div></div><div></div><div></div><div></div><div></div><div></div><div></div><div></div><div></div><div></div><div></div><div></div><div></div><div></div><div></div><div></div><div></div><div></div><div></div><div></div><div></div><div></div><div></div><div></div><div></div><div></div><div></div><div></div><div></div><div></div><div></div><div></div><div></div><div></div><div></div><div></div><div></div><div></div><div></div><div></div><div></div><div></div><div></div><div></div><div></div><div></div><div></div><div></div><div></div><div></div><div></div><div></div><div></div><div></div><div></div><div></div><div></div><div></div><div></div><div></div><div></div><div></div><div></div><div></div><div></div><div></div><div></div><div></div><div></div><div></div><div></div><div></div><div></div><div></div><div></div><div></div><div></div><div></div><div></div><div></div><div></div><div></div><div></div><div></div><div></div><div></div><div></div><div></div><div></div><div></div><div></div><div></div><div></div><div></div><div></div><div></div><div></div><div></div><div></div><div></div><div></div><div></div><div></div><div></div><div></div><div></div><div></div><div></div><div></div><div></div><div></div><div></div><div></div><div></div><div></div><div></div><div></div><div></div><div></div><div></div><div></div><div></div><div></div><div></div><div></div><div></div><div></div><div></div><div></div><div></div><div></div><div></div><div></div><div></div><div></div><div></div><div></div><div></div><div></div><div></div><div></div><div></div><div></div><div></div><div></div><div></div><div></div><div></div><div></div><div></div><div></div><div></div><div></div><div></div><div></div><div></div><div></div><div></div><div></div><div></div><div></div><div></div><div></div><div></div><div></div><div></div><div></div><div></div><div></div><div></div><div></div><div></div><div></div><div></div><div></div><div></div><div></div><div></div><div></div><div></div><div></div><div></div><div></div><div></div><div></div><div></div><div></div><div></div><div></div><div></div><div></div><div></div><div></div><div></div><div></div><div></div><div></div><div></div><div></div><div></div><div></div><div></div><div></div><div></div><div></div><div></div><div></div><div></div><div></div><div></div><div></div><div></div><div></div><div></div><div></div><div></div><div></div><div></div><div></div><div></div><div></div><div></div><div></div><div></div><div></div><div></div><div></div><div></div><div></div><div></div><div></div><div></div><div></div><div></div><div></div><div></div><div></div><div></div><div></div><div></div><div></div><div></div><div></div><div></div><div></div><div></div><div></div><div></div><div></div><div></div><div></div><div></div><div></div><div></div><div></div><div></div><div></div><div></div><div></div><div></div><div></div><div></div><div></div><div></div><div></div><div></div><div></div><div></div><div></div><div></div><div></div><div></div><div></div><div></div><div></div><div></div><div></div><div></div><div></div><div></div><div></div><div></div><div></div><div></div><div></div><div></div><div></div><div></div><div></div><div></div><div></div><div></div><div></div><div></div><div></div><div></div><div></div><div></div><div></div><div></div><div></div><div></div><div></div><div></div><div></div><div></div><div></div><div></div><div></div><div></div><div></div><div></div><div></div><div></div><div></div><div></div><div></div><div></div><div></div><div></div><div></div><div></div><div></div><div></div><div></div><div></div><div></div><div></div><div></div><div></div><div></div><div></div><div></div><div></div><div></div><div></div><div></div><div></div><div></div><div></div><div></div><div></div><div></div><div></div><div></div><div></div><div></div><div></div><div></div><div></div><div></div><div></div><div></div><div></div><div></div><div></div><div></div><div></div><div></div><div></div><div></div><div></div><div></div><div></div><div></div><div></div><div></div><div></div><div></div><div></div><div></div><div></div><div></div><div></div><div></div><div></div><div></div><div></div><div></div><div></div><div></div><div></div><div></div><div></div><div></div><div></div><div></div><div></div><div></div><div></div><div></div><div></div><div></div><div></div><div></div><div></div><div></div><div></div><div></div><div></div><div></div><div></div><div></div><div></div><div></div><div></div><div></div><div></div><div></div><div></div><div></div><div></div><div></div><div></div><div></div><div></div><div></div><div></div><div></div><div></div><div></div><div></div><div></div><div></div><div></div><div></div><div></div><div></div><div></div><div></div><div></div><div></div><div></div><div></div><div></div><div></div><div></div><div></div><div></div><div></div><div></div><div></div><div></div><div></div><div></div><div></div><div></div><div></div><div></div><div></div><div></div><div></div><div></div><div></div><div></div><div></div><div></div><div></div><div></div><div></div><div></div><div></div><div></div><div></div><div></div><div></div><div></div><div></div><div></div><div></div><div></div><div></div><div></div><div></div><div></div><div></div><div></div><div></div><div></div><div></div><div></div><div></div><div></div><div></div><div></div><div></div><div></div><div></div><div></div><div></div><div></div><div></div><div></div><div></div><div></div><div></div><div></div><div></div><div></div><div></div><div></div><div></div><div></div><div></div><div></div><div></div><div></div><div></div><div></div><div></div><div></div><div></div><div></div><div></div><div></div><div></div><div></div><div></div><div></div><div></div><div></div><div></div><div></div><div></div><div></div><div></div><div></div><div></div><div></div><div></div><div></div><div></div><div></div><div></div><div></div><div></div><div></div><div></div><div></div><div></div><div></div><div></div><div></div><div></div><div></div><div></div><div></div><div></div><div></div><div></div><div></div><div></div><div></div><div></div><div></div><div></div><div></div><div></div><div></div><div></div><div></div><div></div><div></div><div></div><div></div><div></div><div></div><div></div><div></div><div></div><div></div><div></div><div></div><div></div><div></div><div></div><div></div><div></div><div></div><div></div><div></div><div></div><div></div><div></div><div></div><div></div><div></div><div></div><div></div><div></div><div></div><div></div><div></div><div></div><div></div><div></div><div></div><div></div><div></div><div></div><div></div><div></div><div></div><div></div><div></div><div></div><div></div><div></div><div></div><div></div><div></div><div></div><div></div><div></div><div></div><div></div><div></div><div></div><div></div><div></div><div></div><div></div><div></div><div></div><div></div><div></div><div></div><div></div><div></div><div></div><div></div><div></div><div></div><div></div><div></div><div></div><div></div><div></div><div></div><div></div><div></div><div></div><div></div><div></div><div></div><div></div><div></div><div></div><div></div><div></div><div></div><div></div><div></div><div></div><div></div><div></div><div></div><div></div><div></div><div></div><div></div><div></div><div></div><div></div><div></div><div></div><div></div><div></div><div></div><div></div><div></div><div></div><div></div><div></div><div></div><div></div><div></div><div></div><div></div><div></div><div></div><div></div><div></div><div></div><div></div><div></div><div></div><div></div><div></div><div></div><div></div><div></div><div></div><div></div><div></div><div></div><div></div><div></div><div></div><div></div><div></div><div></div><div></div><div></div><div></div><div></div><div></div><div></div><div></div><div></div><div></div><div></div><div></div><div></div><div></div><div></div><div></div><div></div><div></div><div></div><div></div><div></div><div></div><div></div><div></div><div></div><div></div><div></div><div></div><div></div><div></div><div></div><div></div><div></div><div></div><div></div><div></div><div></div><div></div><div></div><div></div><div></div><div></div><div></div><div></div><div></div><div></div><div></div><div></div><div></div><div></div><div></div><div></div><div></div><div></div><div></div><div></div><div></div><div></div><div></div><div></div><div></div><div></div><div></div><div></div><div></div><div></div><div></div><div></div><div></div><div></div><div></div><div></div><div></div><div></div><div></div><div></div><div></div><div></div><div></div><div></div><div></div><div></div><div></div><div></div><div></div><div></div><div></div><div></div><div></div><div></div><div></div><div></div><div></div><div></div><div></div><div></div><div></div><div></div><div></div><div></div><div></div><div></div><div></div><div></div><div></div><div></div><div></div><div></div><div></div><div></div><div></div><div></div><div></div><div></div><div></div><div></div><div></div><div></div><div></div><div></div><div></div><div></div><div></div><div></div><div></div><div></div><div></div><div></div><div></div><div></div><div></div><div></div><div></div><div></div><div></div><div></div><div></div><div></div><div></div><div></div><div></div><div></div><div></div><div></div><div></div><div></div><div></div><div></div><div></div><div></div><div></div><div></div><div></div><div></div><div></div><div></div><div></div><</div>		

Total Depth: 20 feet

Borehole Diameter: 8 1/4-inch

Drill Method: Hollow Stem Auger

Drilled By: Eichelbergers, Inc.

Logged By: C. Illig

Well Diameter: 2-inch

Casing Length: 5 feet

Screen Length: 15 feet

Screen Slot Size: 0.010-inch

* Sample Submitted for Laboratory Analysis

Surface Elevation: NA

Casing Elevation: NA

Depth to Water - Static: NA

Gauging Date: NA

Sheet: 1 of 1



Letterle & Associates, Inc.
2022 Axemann Road, Suite 201
Bellefonte, Pennsylvania 16823

Project: Sohail's Store

Location: 835 S. Eisenhower Blvd., Middletown, PA 17057

Client: Sohail Riarih

Drill Date: May 27, 2020

Monitoring Well MW-2

DEPTH (feet)	DESCRIPTION	SAMPLES				PID (ppm)	WELL CONSTRUCTION DETAILS
		Number	Type	Recovery	Blows (per 6-inches)		
0	Asphalt: Gravel subbase						
1							
2	GW: Silty clay, red brown, dry, large cobbles/brick	1	HSA			1.1	
3							
4	CL: Black silty clay, dry, odor					7.9	
5						104.4	
6	Clay, tight, brown, slightly moist, no odor					9.7	
7						0.3	
8		2	HSA				
9							
10	Moist @ 9.5', sandy clay, brown/gray					10.4	
11	Sandy clay, light brown/gray, moist, odor					59.2	
12						6.4	
13	Gray/tan clay, tight, slightly moist	3	HSA				
14							
15	Clayey, silty sand, moist, gray, odor					45.5	
16							
17							
18		4	HSA				
19							
20	Borehole Terminated @ 20'						

Total Depth: 20 feet

Borehole Diameter: 8 1/4-inch

Drill Method: Hollow Stem Auger

Drilled By: Eichelbergers, Inc.

Logged By: C. Illig

Well Diameter: 2-inch

Casing Length: 5 feet

Screen Length: 15 feet

Screen Slot Size: 0.010-inch

Surface Elevation: NA

Casing Elevation: NA

Depth to Water - Static: NA

Gauging Date: NA

* Sample Submitted for Laboratory Analysis

Sheet: 1 of 1



Letterle & Associates, Inc.
2022 Axemann Road, Suite 201
Bellefonte, Pennsylvania 16823

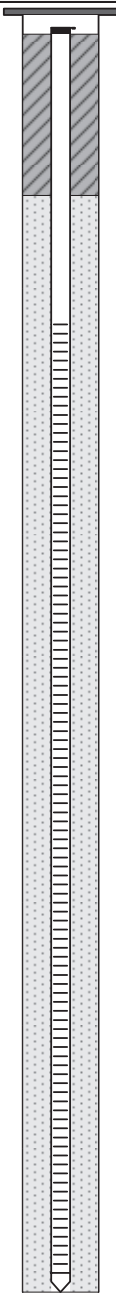
Project: Sohail's Store

Location: 835 S. Eisenhower Blvd., Middletown, PA 17057

Client: Sohail Riarrh

Drill Date: May 26 - 27, 2020

Monitoring Well MW-3

DEPTH (feet)	DESCRIPTION	SAMPLES				PID (ppm)	WELL CONSTRUCTION DETAILS						
		Number	Type	Recovery	Blows (per 6-inches)								
0	Asphalt: Gravel subbase	1	HSA			0 500 1,000 1,500 2,000	Traffic Rated Steel Manhole Cover		Bentonite Chip Seal				
1													
2	CL: Brown/orange silty clay, dry, no odor/staining											8 1/4-inch Diameter Borehole	Schedule 40 PVC Casing
3													
4													
5	Brown/tan silty clay, moist, no odor/staining							Sand Pack					
6													
7													
8								Schedule 40 PVC Screen					
9													
10													
11								Schedule 40 PVC End Cap					
12													
13													
14													
15													
16													
17													
18													
19													
20	Borehole Terminated @ 20'												

Total Depth: 20 feet

Borehole Diameter: 8 1/4-inch

Drill Method: Hollow Stem Auger

Drilled By: Eichelbergers, Inc.

Logged By: C. Illig

Well Diameter: 2-inch

Casing Length: 5 feet

Screen Length: 15 feet

Screen Slot Size: 0.010-inch

* Sample Submitted for Laboratory Analysis

Surface Elevation: NA

Casing Elevation: NA

Depth to Water - Static: NA

Gauging Date: NA

Sheet: 1 of 1



Letterle & Associates, Inc.
2022 Axemann Road, Suite 201
Bellefonte, Pennsylvania 16823

Project: Sohail's Store

Location: 835 S. Eisenhower Blvd., Middletown, PA 17057

Client: Sohail Riarrh

Drill Date: May 27, 2020

Monitoring Well MW-4

DEPTH (feet)	DESCRIPTION	SAMPLES				PID (ppm)	WELL CONSTRUCTION DETAILS
		Number	Type	Recovery	Blows (per 6-inches)		
0	Asphalt: Gravel subbase	1	HSA				Traffic Rated Steel Manhole Cover
1							
2	CL: Large cobbles, orange silty clay, no odor/staining, dry						
3		2	HSA				Bentonite Chip Seal
4							
5	Brown/orange silty clay, no odor/staining						
6		3	HSA				Schedule 40 PVC Casing
7							
8							
9		4	HSA				8 1/4-inch Diameter Borehole
10	Moist @ 10'						
11							
12		3	HSA				Sand Pack
13							
14							
15		4	HSA				Schedule 40 PVC Screen
16							
17							
18		4	HSA				Schedule 40 PVC End Cap
19							
20	Borehole Terminated @ 20'						

Total Depth: 20 feet

Borehole Diameter: 8 1/4-inch

Drill Method: Hollow Stem Auger

Drilled By: Eichelbergers, Inc.

Logged By: C. Illig

Well Diameter: 2-inch

Casing Length: 5 feet

Screen Length: 15 feet

Screen Slot Size: 0.010-inch

* Sample Submitted for Laboratory Analysis

Surface Elevation: NA

Casing Elevation: NA

Depth to Water - Static: NA

Gauging Date: NA



Letterle & Associates, Inc.
2022 Axemann Road, Suite 201
Bellefonte, Pennsylvania 16823

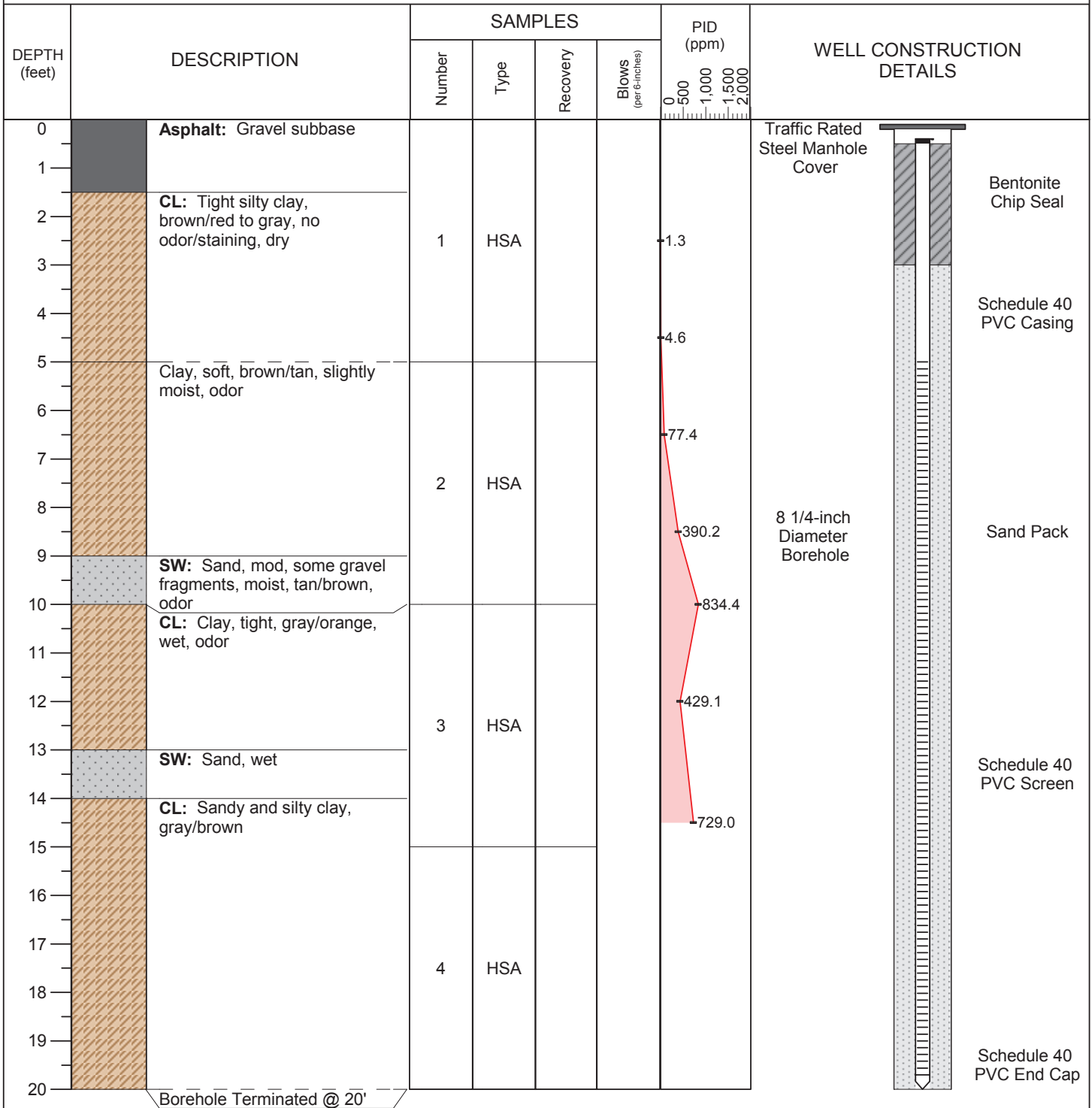
Project: Sohail's Store

Location: 835 S. Eisenhower Blvd., Middletown, PA 17057

Client: Sohail Riarrh

Drill Date: May 26, 2020

Monitoring Well MW-5



Total Depth: 20 feet

Borehole Diameter: 8 1/4-inch

Drill Method: Hollow Stem Auger

Drilled By: Eichelbergers, Inc.

Logged By: C. Illig

Well Diameter: 2-inch

Casing Length: 5 feet

Screen Length: 15 feet

Screen Slot Size: 0.010-inch

* Sample Submitted for Laboratory Analysis

Surface Elevation: NA

Casing Elevation: NA

Depth to Water - Static: NA

Gauging Date: NA

Sheet: 1 of 1



Letterle & Associates, Inc.
2022 Axemann Road, Suite 201
Bellefonte, Pennsylvania 16823

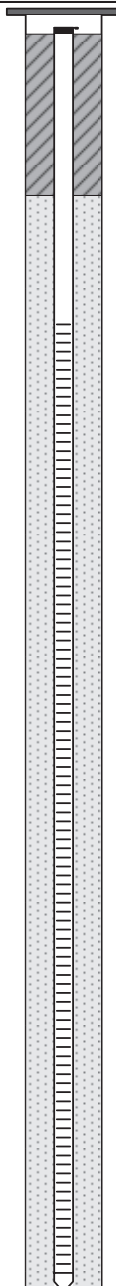
Project: Sohail's Store

Location: 835 S. Eisenhower Blvd., Middletown, PA 17057

Client: Sohail Riarrh

Drill Date: May 28, 2020

Monitoring Well MW-6

DEPTH (feet)	DESCRIPTION	SAMPLES				PID (ppm)	WELL CONSTRUCTION DETAILS	
		Number	Type	Recovery	Blows (per 6-inches)			
0	Asphalt: Gravel subbase							
1								
2	GW: Silty clay, brown/orange, large cobbles, dry, no odor/staining	1	HSA					
3								
4								
5								
6								
7								
8	CL: Silty clay, gray/brown, tight, slightly moist, no odor/staining	2	HSA					
9								
10								
11								
12								
13		*3	HSA					
14								
15								
16								
17								
18		4	HSA					
19								
20	Borehole Terminated @ 20'							

Total Depth: 20 feet

Borehole Diameter: 8 1/4-inch

Drill Method: Hollow Stem Auger

Drilled By: Eichelbergers, Inc.

Logged By: C. Illig

Well Diameter: 2-inch

Casing Length: 5 feet

Screen Length: 15 feet

Screen Slot Size: 0.010-inch

Surface Elevation: NA

Casing Elevation: NA

Depth to Water - Static: NA

Gauging Date: NA

* Sample Submitted for Laboratory Analysis

Sheet: 1 of 1



Letterle & Associates, Inc.
2022 Axemann Road, Suite 201
Bellefonte, Pennsylvania 16823

Project: Sohail's Store

Location: 835 S. Eisenhower Blvd., Middletown, PA 17057

Client: Sohail Riarih

Drill Date: August 31, 2020

Monitoring Well MW-7

DEPTH (feet)	DESCRIPTION	SAMPLES				PID (ppm)	WELL CONSTRUCTION DETAILS
		Number	Type	Recovery	Blows (per 6-inches)		
0	Grass, brown/tan silt and gravel, stiff						Traffic Rated Steel Manhole Cover
1	CL: Slate fill, gray						
2		1	HC			0.0	Bentonite Chip Seal
3							
4	Brown silty clay, soft, roots						Schedule 40 PVC Casing
5						0.0	
6							
7		2	HSA				
8							
9							
10						0.1	
11							
12		3	HSA				
13							
14							Schedule 40 PVC Screen
15						0.1	
16							
17		4	HSA				
18							
19							
20	Borehole Terminated @ 20'					0.3	Schedule 40 PVC End Cap

Total Depth: 20 feet

Borehole Diameter: 8 1/2-inch

Drill Method: Hollow Stem Auger

Drilled By: Eichelbergers, Inc.

Logged By: C. Illig

Well Diameter: 2-inch

Casing Length: 5 feet

Screen Length: 15 feet

Screen Slot Size: 0.010-inch

Surface Elevation: NA

Casing Elevation: NA

Depth to Water - Static: NA

Gauging Date: NA

* Sample Submitted for Laboratory Analysis

Sheet: 1 of 1



Letterle & Associates, Inc.
2022 Axemann Road, Suite 201
Bellefonte, Pennsylvania 16823

Project: Sohail's Store

Location: 835 S. Eisenhower Blvd., Middletown, PA 17057

Client: Sohail Riarrh

Drill Date: August 31, 2020

Monitoring Well MW-8

DEPTH (feet)	DESCRIPTION	SAMPLES				PID (ppm)	WELL CONSTRUCTION DETAILS
		Number	Type	Recovery	Blows (per 6-inches)		
0	Asphalt	1	HC			0.0	Traffic Rated Steel Manhole Cover
1	CL: Rock subbase						
2	Clay and rock, tight, brown						
3	Asphalt	2	HSA			0.1	Bentonite Chip Seal
4	CL: Brown silty clay						
5							
6		3	HSA			0.0	Schedule 40 PVC Casing
7							
8							
9		4	HSA			0.4	8 1/2-inch Diameter Borehole
10							
11							
12							Sand Pack
13							
14							
15	Sandy clay, coarse, moist, gray/tan, no odor/staining						Schedule 40 PVC Screen
16							
17							
18							Schedule 40 PVC End Cap
19							
20							

Borehole Terminated @ 20'

Total Depth: 20 feet

Borehole Diameter: 8 1/2-inch

Drill Method: Hollow Stem Auger

Drilled By: Eichelbergers, Inc.

Logged By: C. Illig

Well Diameter: 2-inch

Casing Length: 5 feet

Screen Length: 15 feet

Screen Slot Size: 0.010-inch

* Sample Submitted for Laboratory Analysis

Surface Elevation: NA

Casing Elevation: NA

Depth to Water - Static: NA

Gauging Date: NA

Sheet: 1 of 1



Letterle & Associates, Inc.
2022 Axemann Road, Suite 201
Bellefonte, Pennsylvania 16823

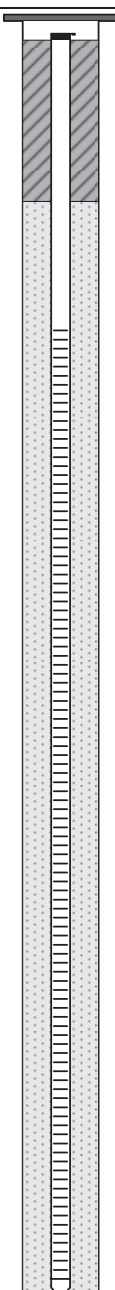
Project: Sohail's Store

Location: 835 S. Eisenhower Blvd., Middletown, PA 17057

Client: Sohail Riarrh

Drill Date: September 1, 2020

Monitoring Well MW-9

DEPTH (feet)	DESCRIPTION	SAMPLES				PID (ppm)	WELL CONSTRUCTION DETAILS
		Number	Type	Recovery	Blows (per 6-inches)		
0	Grass/topsoil						
1							
2	CL: Brown silty clay, some large cobbles	1	HC				
3							
4							
5						0.1	
6							
7							
8		2	HSA				
9							
10						0.3	
11							
12							
13		3	HSA				
14							
15	Silty clay, brown, moist, no odor/staining					0.1	
16							
17							
18		4	HSA				
19							
20	Borehole Terminated @ 20'					0.2	

Total Depth: 20 feet

Borehole Diameter: 8 1/2-inch

Drill Method: Hollow Stem Auger

Drilled By: Eichelbergers, Inc.

Logged By: C. Illig

Well Diameter: 2-inch

Casing Length: 5 feet

Screen Length: 15 feet

Screen Slot Size: 0.010-inch

* Sample Submitted for Laboratory Analysis

Surface Elevation: NA

Casing Elevation: NA

Depth to Water - Static: NA

Gauging Date: NA

Sheet: 1 of 1



Letterle & Associates, Inc.
2022 Axemann Road, Suite 201
Bellefonte, Pennsylvania 16823

Project: Sohail's Store

Location: 835 S. Eisenhower Blvd., Middletown, PA 17057

Client: Sohail Riarrh

Drill Date: March 9 - 10, 2021

Monitoring Well MW-10

DEPTH (feet)	DESCRIPTION	SAMPLES				PID (ppm)	WELL CONSTRUCTION DETAILS
		Number	Type	Recovery	Blows (per 6-inches)		
0	Asphalt						Traffic Rated Steel Manhole Cover
1							
2	CL: Silty clay, brown, large cobbles/wood fragments, odor		AK				Bentonite Chip Seal
3							
4							
5	Clay, dark brown/orange, wet					25.2	Schedule 40 PVC Casing
6							
7							
8							8-inch Diameter Borehole
9							
10						5.5	
11							Sand Pack
12			HSA				
13							
14						0.7	Schedule 40 PVC Screen
15							
16							
17							Schedule 40 PVC End Cap
18							
19							
20	Borehole Terminated @ 20'						

Total Depth: 20 feet

Borehole Diameter: 8-inch

Drill Method: Hollow Stem Auger

Drilled By: Eichelbergers, Inc.

Logged By: C. Illig

Well Diameter: 2-inch

Casing Length: 5 feet

Screen Length: 15 feet

Screen Slot Size: 0.010-inch

* Sample Submitted for Laboratory Analysis

Surface Elevation: NA

Casing Elevation: NA

Depth to Water - Static: NA

Gauging Date: NA



Letterle & Associates, Inc.
2022 Axemann Road, Suite 201
Bellefonte, Pennsylvania 16823

Project: Sohail's Store

Location: 835 S. Eisenhower Blvd., Middletown, PA 17057

Client: Sohail Riarih

Drill Date: March 9 - 10, 2021

Monitoring Well RW-1

DEPTH (feet)	DESCRIPTION	SAMPLES				PID (ppm)	WELL CONSTRUCTION DETAILS	
		Number	Type	Recovery	Blows (per 6-inches)			
0	Asphalt						Traffic Rated Steel Manhole Cover	
1								
2	CL: Silty clay, dark brown/orange, odor, moist		AK					Bentonite Chip Seal
3								
4						310.0		Schedule 40 PVC Casing
5	Silty clay, brown/orange, wet							
6								
7								
8							10-inch Diameter Borehole	Sand Pack
9								
10						34.7		
11								
12								
13								
14						30.8		Schedule 40 PVC Screen
15			HSA					
16								
17								
18								
19								
20						12.7		
21								
22								
23								
24								
25								Schedule 40 PVC End Cap
Borehole Terminated @ 25'								

Total Depth: 25 feet

Borehole Diameter: 10-inch

Drill Method: Hollow Stem Auger

Drilled By: Eichelbergers, Inc.

Logged By: C. Illig

Well Diameter: 4-inch

Casing Length: 5 feet

Screen Length: 20 feet

Screen Slot Size: 0.010-inch

* Sample Submitted for Laboratory Analysis

Surface Elevation: NA

Casing Elevation: NA

Depth to Water - Static: NA

Gauging Date: NA

Sheet: 1 of 1



Letterle & Associates, Inc.
2022 Axemann Road, Suite 201
Bellefonte, Pennsylvania 16823

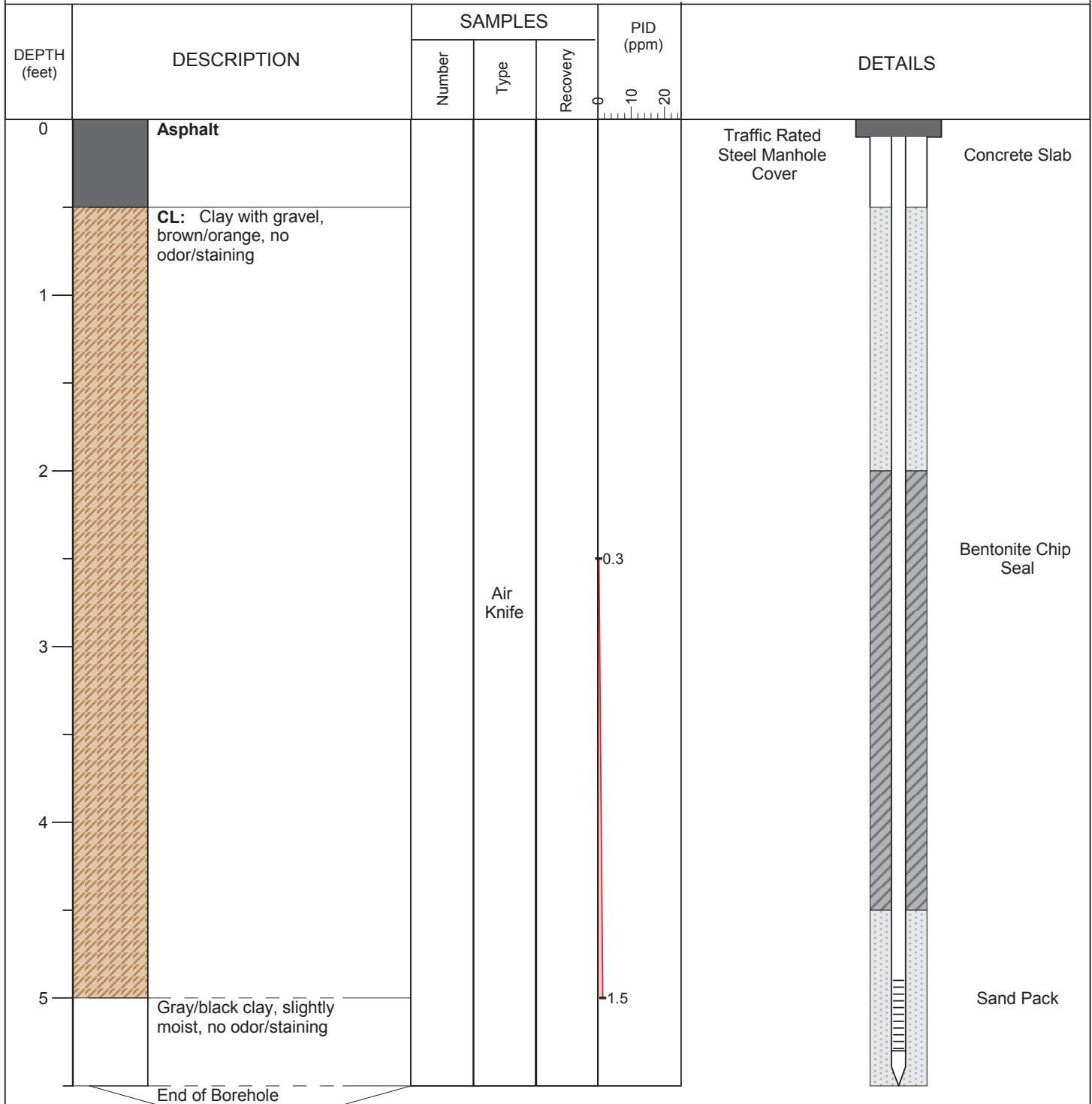
Project: Sohail's Store

Location: 835 S. Eisenhower Blvd., Middletown, PA 17057

Client: Sohail Riarh

Install Date: September 1, 2020

Soil Vapor Point SVP-1



Total Depth: 5.5 feet

Borehole Diameter: 8-inch

Drill Method: Air Knife

Drilled By: Eichelberger, Inc.

Logged By: C. Illig

Casing Type: 1/4" Tubing

Casing Length: 4.9 feet

Screen Length: 6-inch

Screen Type: Stainless Steel Implant

Sand Size: #1

Sheet: 1 of 1



Letterle & Associates, Inc.
2022 Axemann Road, Suite 201
Bellefonte, Pennsylvania 16823

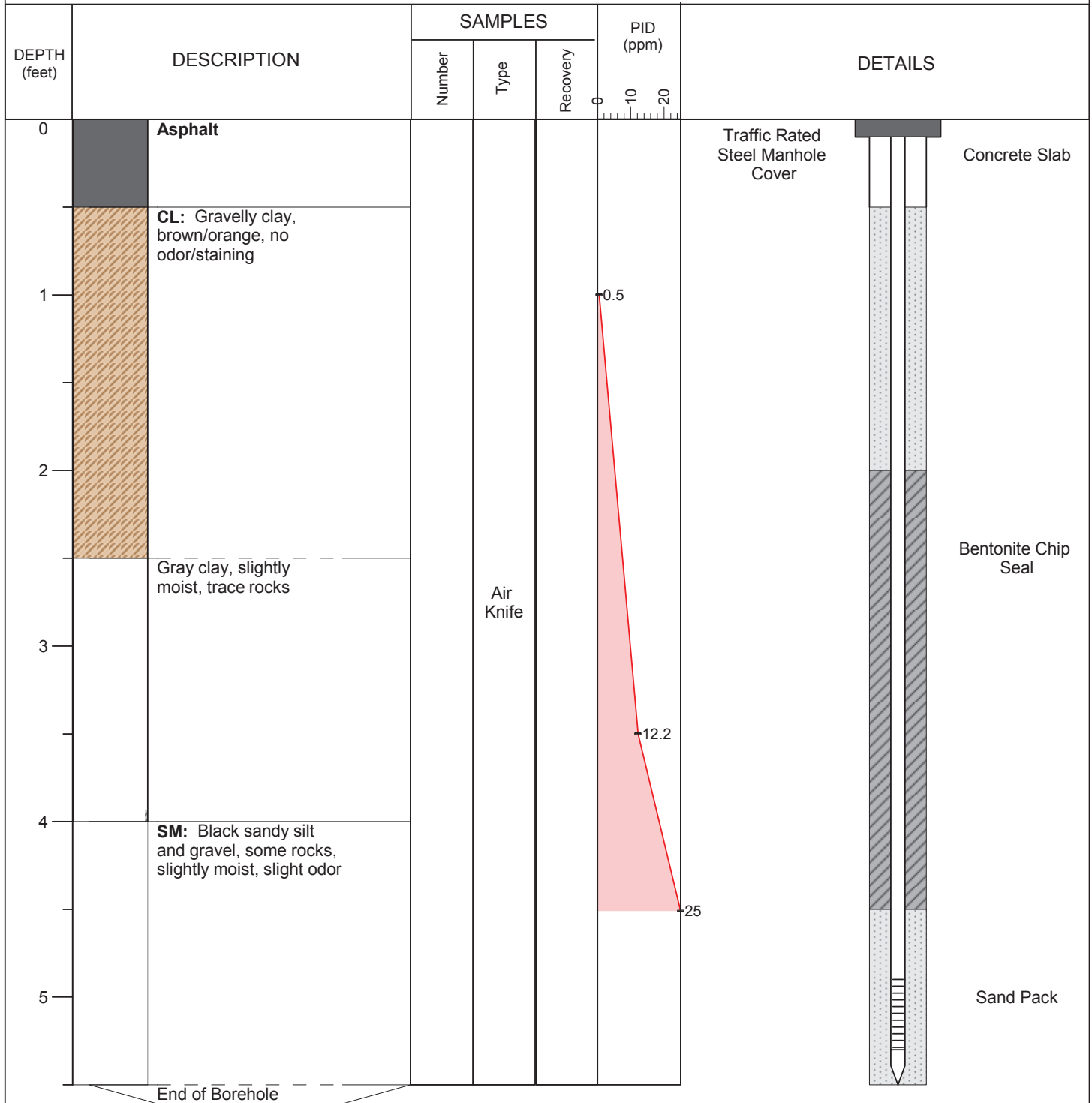
Project: Sohail's Store

Location: 835 S. Eisenhower Blvd., Middletown, PA 17057

Client: Sohail Riarh

Install Date: September 1, 2020

Soil Vapor Point SVP-2



Total Depth: 5.5 feet

Borehole Diameter: 8-inch

Drill Method: Air Knife

Drilled By: Eichelberger, Inc.

Logged By: C. Illig

Casing Type: 1/4" Tubing

Casing Length: 4.9 feet

Screen Length: 6-inch

Screen Type: Stainless Steel Implant

Sand Size: #1

Sheet: 1 of 1



Letterle & Associates, Inc.
2022 Axemann Road, Suite 201
Bellefonte, Pennsylvania 16823

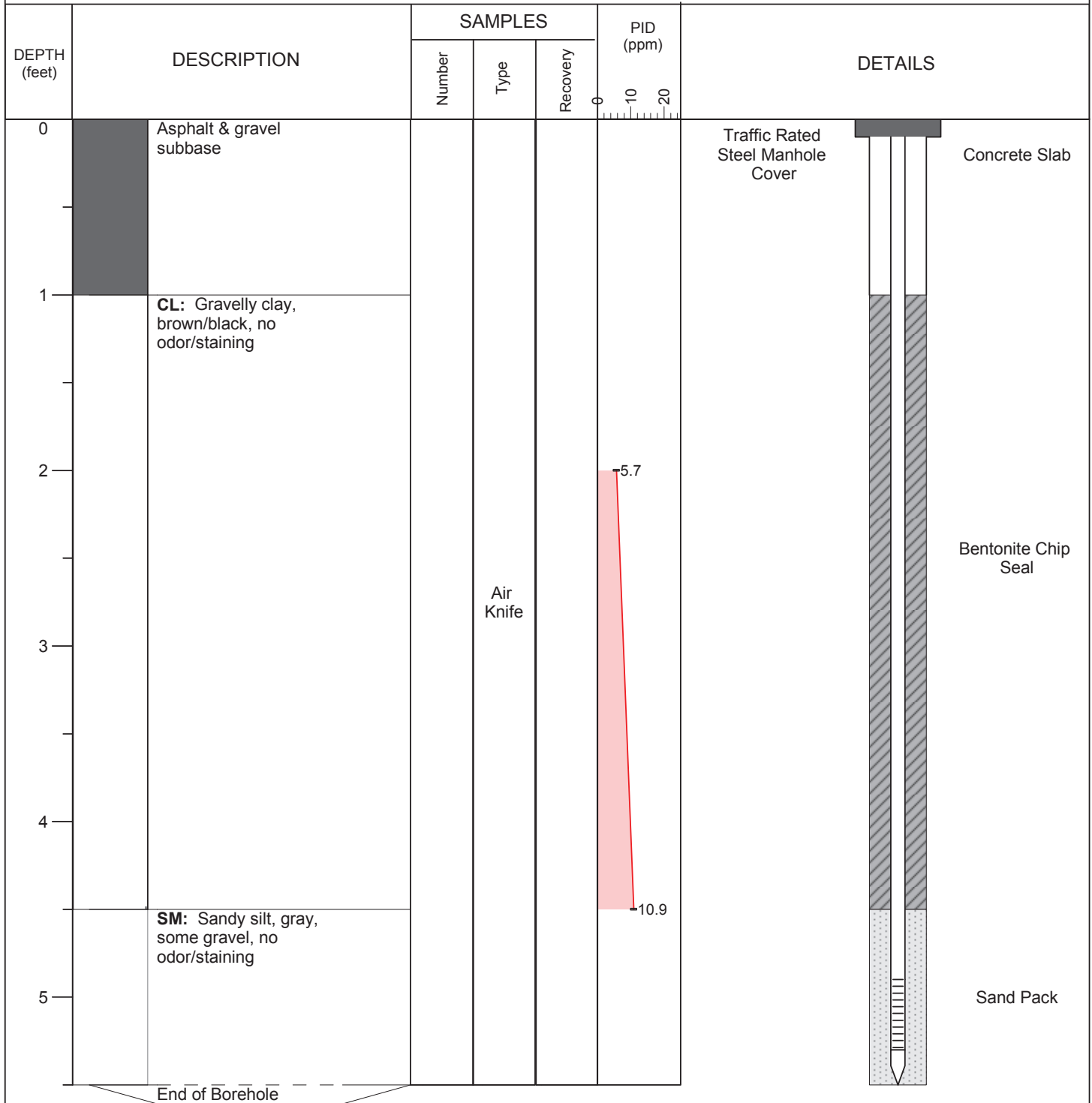
Project: Sohail's Store

Location: 835 S. Eisenhower Blvd., Middletown, PA 17057

Client: Sohail Riarh

Install Date: September 1, 2020

Soil Vapor Point SVP-3



Total Depth: 5.5 feet

Borehole Diameter: 8-inch

Drill Method: Air Knife

Drilled By: Eichelberger, Inc.

Logged By: C. Illig

Casing Type: 1/4" Tubing

Casing Length: 4.9 feet

Screen Length: 6-inch

Screen Type: Stainless Steel Implant

Sand Size: #1

Sheet: 1 of 1