

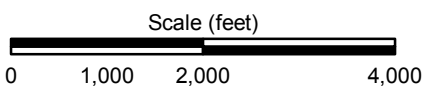
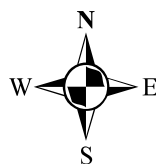
Portion of the Swanville, PA
 USGS 7.5-Minute Quadrangle
 Copyright© 2013 National Geographic Society, i-cubed

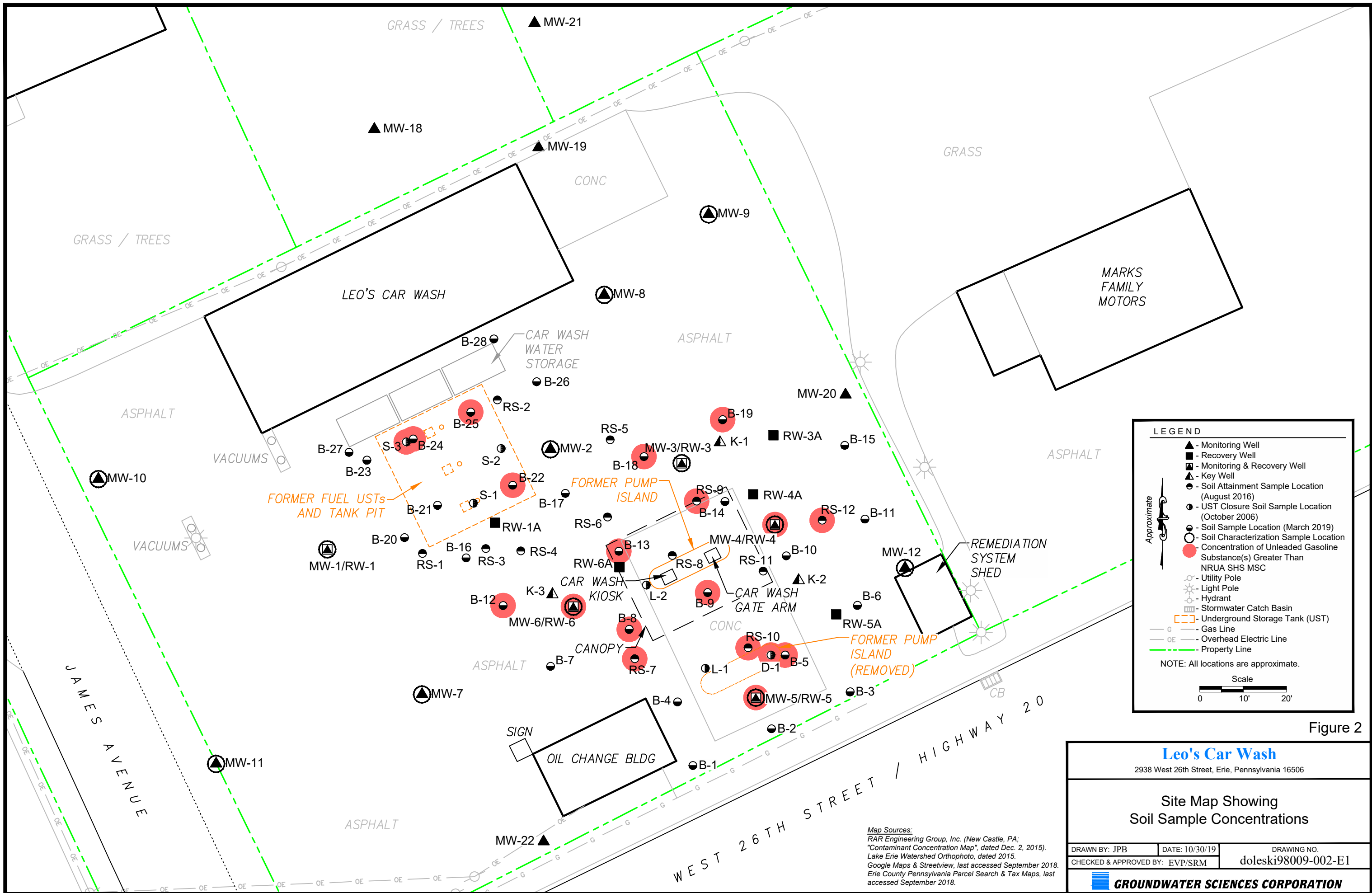
Figure 1

Leo's Car Wash

2938 West 26th Street, Erie, Pennsylvania 16506

Site Location Map





LEGEND

- ▲ - Monitoring Well
- - Recovery Well
- ▲ - Monitoring & Recovery Well
- ▲ - Key Well
- - Soil Attainment Sample Location (August 2016)
- - UST Closure Soil Sample Location (October 2006)
- - Soil Sample Location (March 2019)
- - Soil Characterization Sample Location
- - Concentration of Unleaded Gasoline Substance(s) Greater Than NRUA SHS MSC
- - Utility Pole
- ☀ - Light Pole
- - Hydrant
- ▭ - Stormwater Catch Basin
- ▭ - Underground Storage Tank (UST)
- G — Gas Line
- OE — Overhead Electric Line
- — Property Line

NOTE: All locations are approximate.

Scale
0 10' 20'

Figure 2

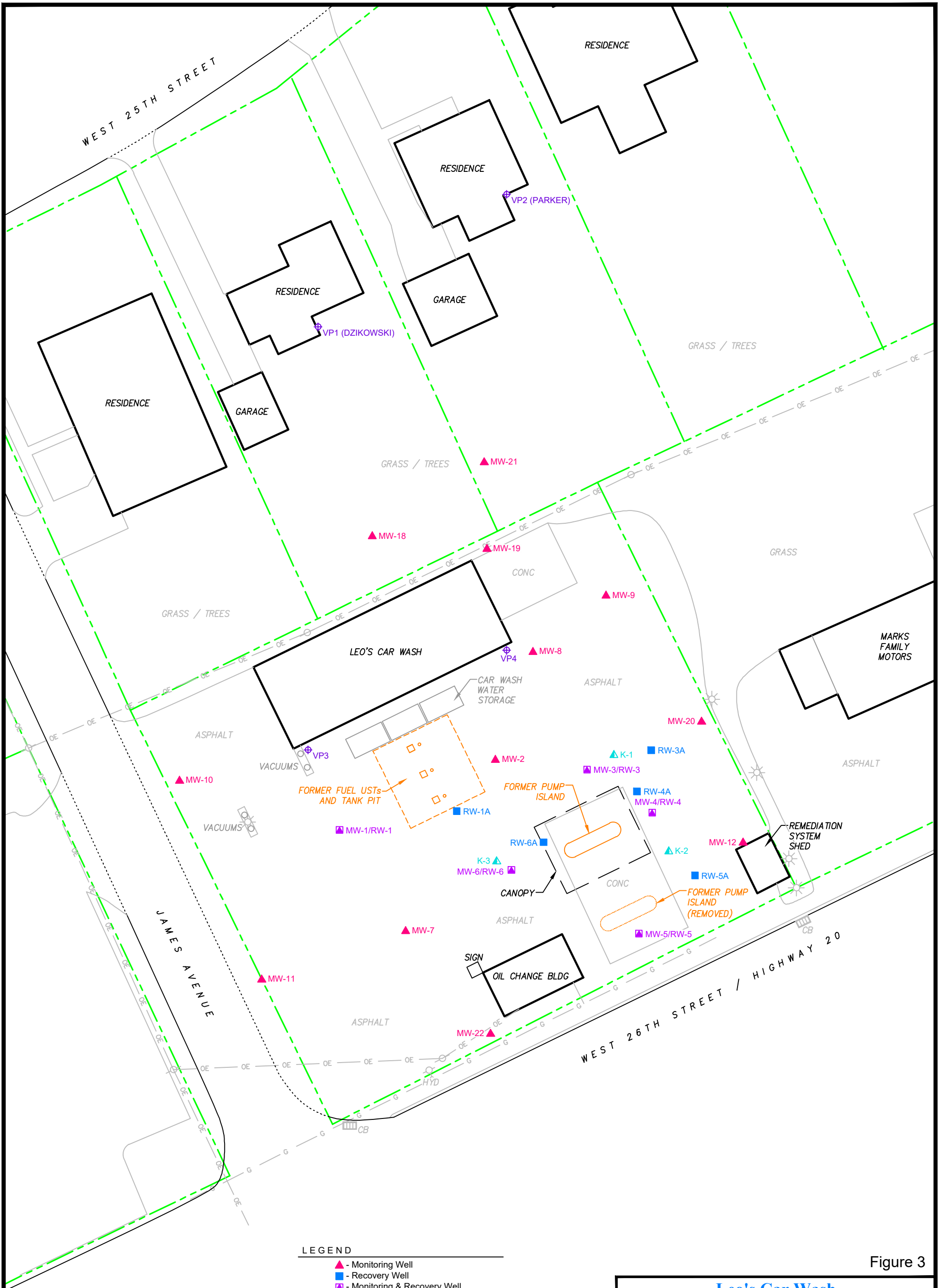
Leo's Car Wash
2938 West 26th Street, Erie, Pennsylvania 16506

**Site Map Showing
Soil Sample Concentrations**

DRAWN BY: JPB	DATE: 10/30/19	DRAWING NO.
CHECKED & APPROVED BY: EVP/SRM		doleski98009-002-E1

GROUNDWATER SCIENCES CORPORATION

Map Sources:
 RAR Engineering Group, Inc. (New Castle, PA);
 "Contaminant Concentration Map", dated Dec. 2, 2015).
 Lake Erie Watershed Orthophoto, dated 2015.
 Google Maps & Streetview, last accessed September 2018.
 Erie County Pennsylvania Parcel Search & Tax Maps, last
 accessed September 2018.



LEGEND

- ▲ - Monitoring Well
- - Recovery Well
- - Monitoring & Recovery Well
- ▲ - Key Well
- ⊕ - Vapor Point
- - Utility Pole
- ⊙ - Light Pole
- ⊙ - Hydrant
- ⊙ - Stormwater Catch Basin
- - Underground Storage Tank (UST)
- G — Gas Line
- OE — Overhead Electric Line
- — Property Line

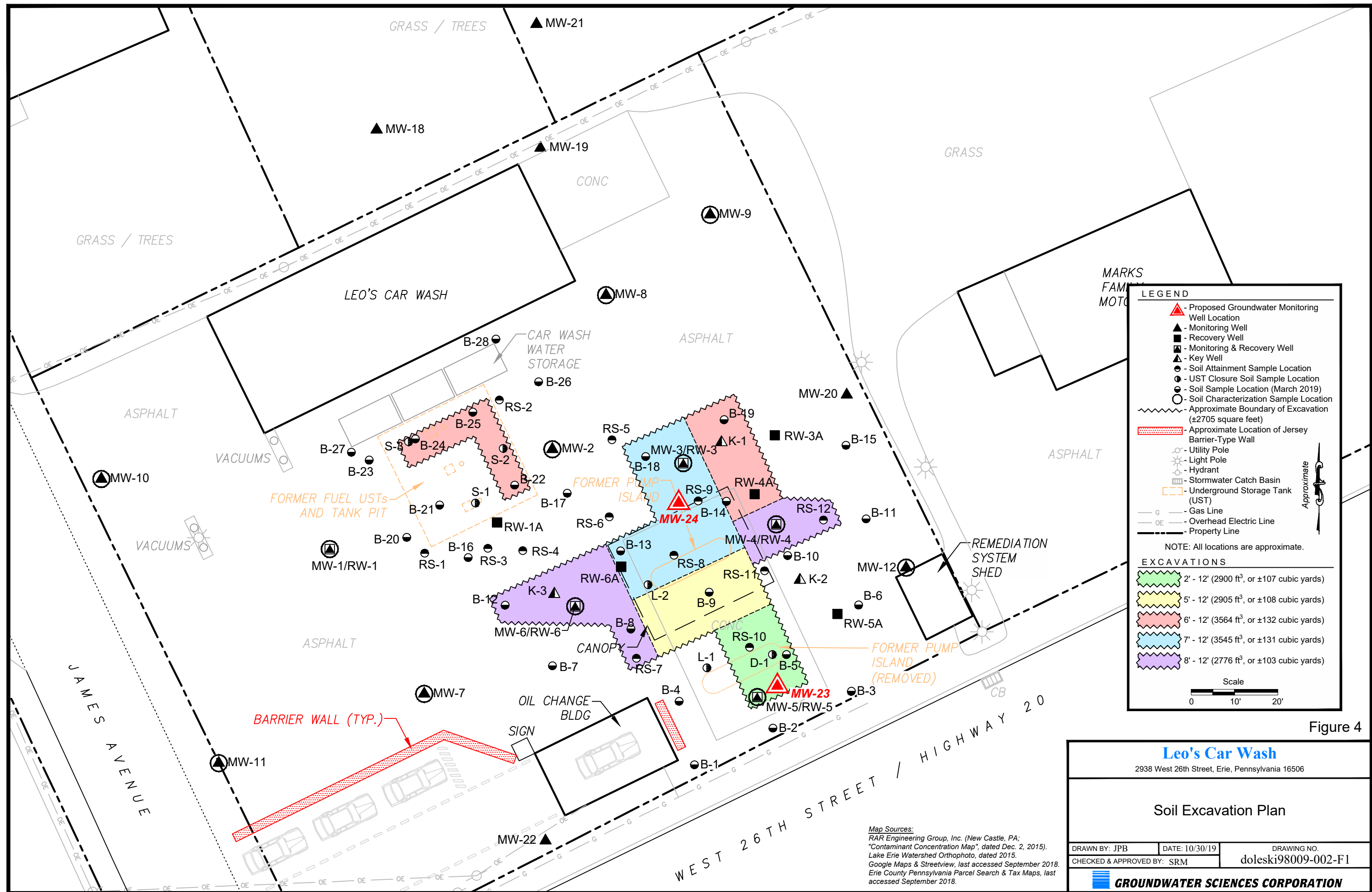
NOTE: All locations are approximate.



Figure 3

Map Sources:
 RAR Engineering Group, Inc. (New Castle, PA);
 "Contaminant Concentration Map", dated Dec. 2, 2015).
 Lake Erie Watershed Orthophoto, dated 2015.
 Google Maps & Streetview, last accessed September 2018.
 Erie County Pennsylvania Parcel Search & Tax Maps, last
 accessed September 2018.

Leo's Car Wash		
2938 West 26th Street, Erie, Pennsylvania 16506		
Expanded Site Map		
DRAWN BY: JPB	DATE: 10/30/19	DRAWING NO.
CHECKED & APPROVED BY: SRM		doleski98009-001-C2
GROUNDWATER SCIENCES CORPORATION		



LEGEND

- ▲ Proposed Groundwater Monitoring Well Location
- ▲ Monitoring Well
- Recovery Well
- ▲ Monitoring & Recovery Well
- ▲ Key Well
- Soil Attainment Sample Location
- UST Closure Soil Sample Location
- Soil Sample Location (March 2019)
- Soil Characterization Sample Location
- - - - - Approximate Boundary of Excavation (±2705 square feet)
- ▨ Approximate Location of Jersey Barrier-Type Wall
- Utility Pole
- ☼ Light Pole
- Hydrant
- ☒ Stormwater Catch Basin
- Underground Storage Tank (UST)
- G — Gas Line
- OE — Overhead Electric Line
- - - - - Property Line

NOTE: All locations are approximate.

EXCAVATIONS

- 2' - 12' (2900 ft³, or ±107 cubic yards)
- 5' - 12' (2905 ft³, or ±108 cubic yards)
- 6' - 12' (3564 ft³, or ±132 cubic yards)
- 7' - 12' (3545 ft³, or ±131 cubic yards)
- 8' - 12' (2776 ft³, or ±103 cubic yards)

Scale: 0 10' 20'

Figure 4

Leo's Car Wash
2938 West 26th Street, Erie, Pennsylvania 16506

Soil Excavation Plan

DRAWN BY: JPB	DATE: 10/30/19	DRAWING NO.
CHECKED & APPROVED BY: SRM		doleski98009-002-F1

GROUNDWATER SCIENCES CORPORATION

Map Sources:
 RAR Engineering Group, Inc. (New Castle, PA);
 "Contaminant Concentration Map", dated Dec. 2, 2015).
 Lake Erie Watershed Orthophoto, dated 2015.
 Google Maps & Streetview, last accessed September 2018.
 Erie County Pennsylvania Parcel Search & Tax Maps, last
 accessed September 2018.