

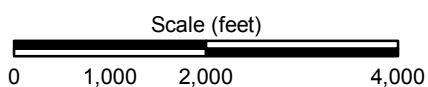
Portions of the Leontes Mills and Wallacetown, PA  
 USGS 7.5-Minute Quadrangles  
 Copyright © 2013 National Geographic Society, i-cubed

Figure 1

**Woodland Food & Fuel**

2829 Woodland Bigler Highway, Woodland, Pennsylvania 16881

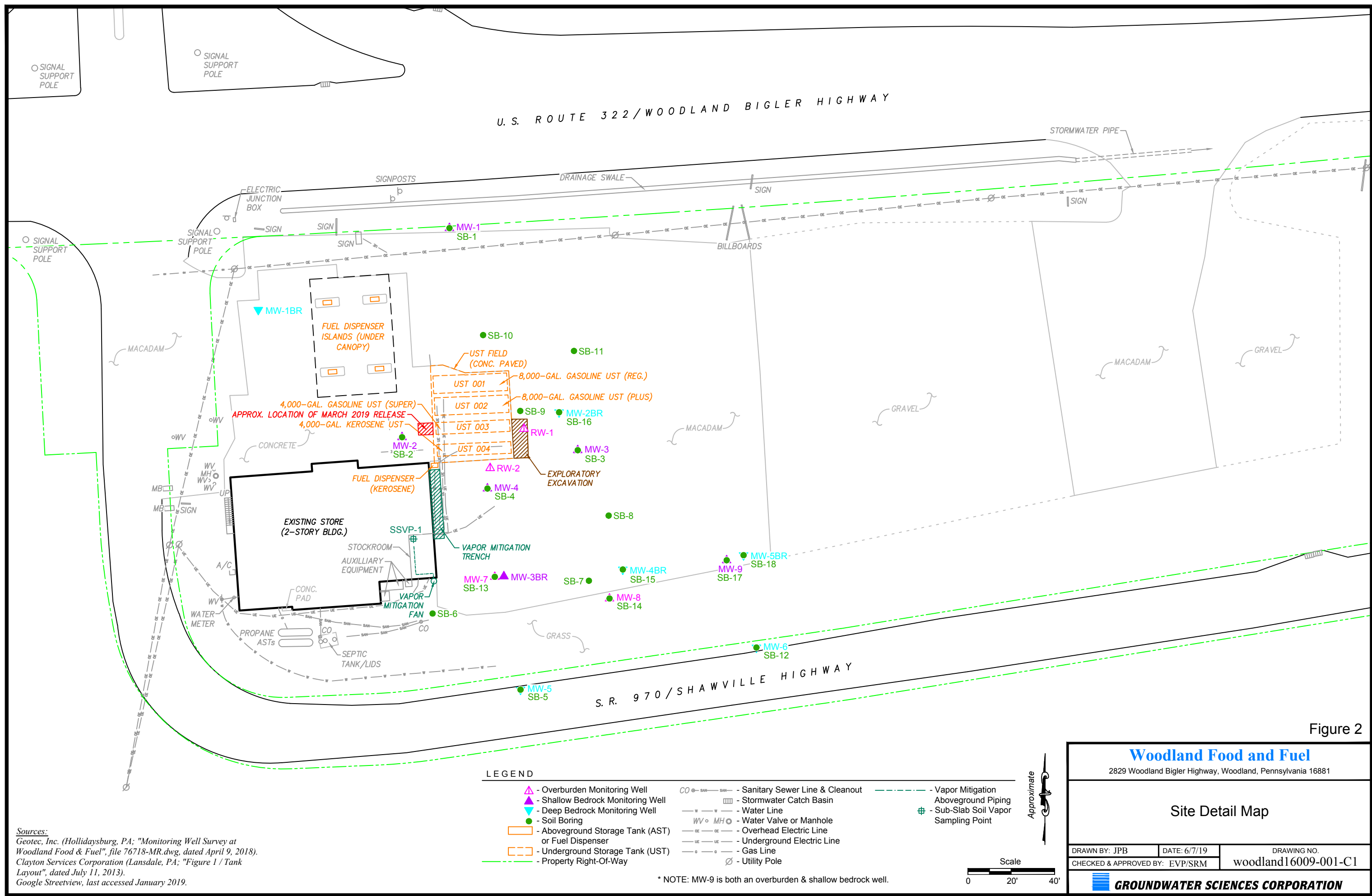
Site Location Map



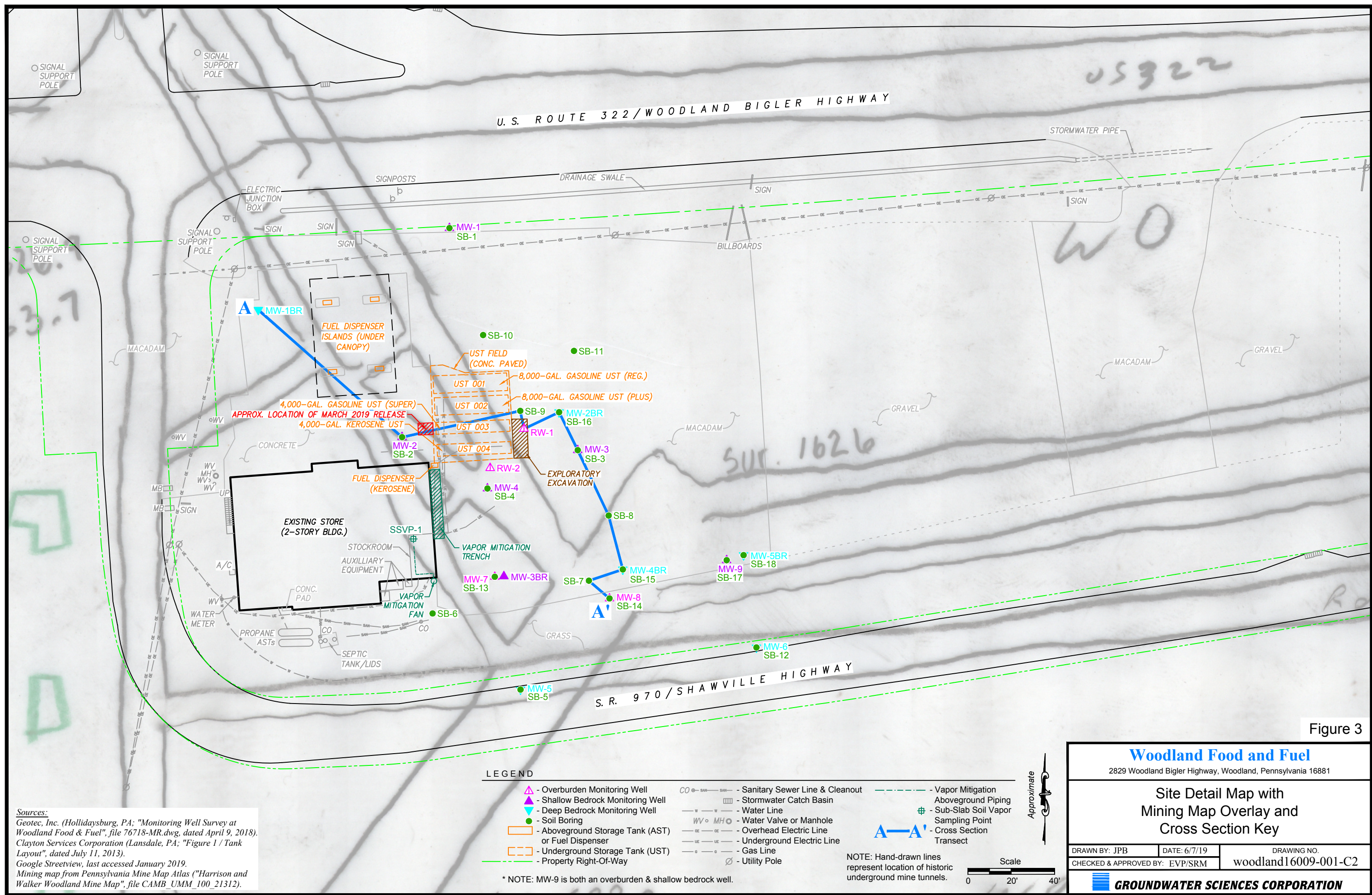
**GROUNDWATER SCIENCES CORPORATION**

Q:\16000\16009\43 - Woodland\GIS\Projects\Fig1\_Woodland\_SiteTopoLocMap.mxd • 1/29/2019





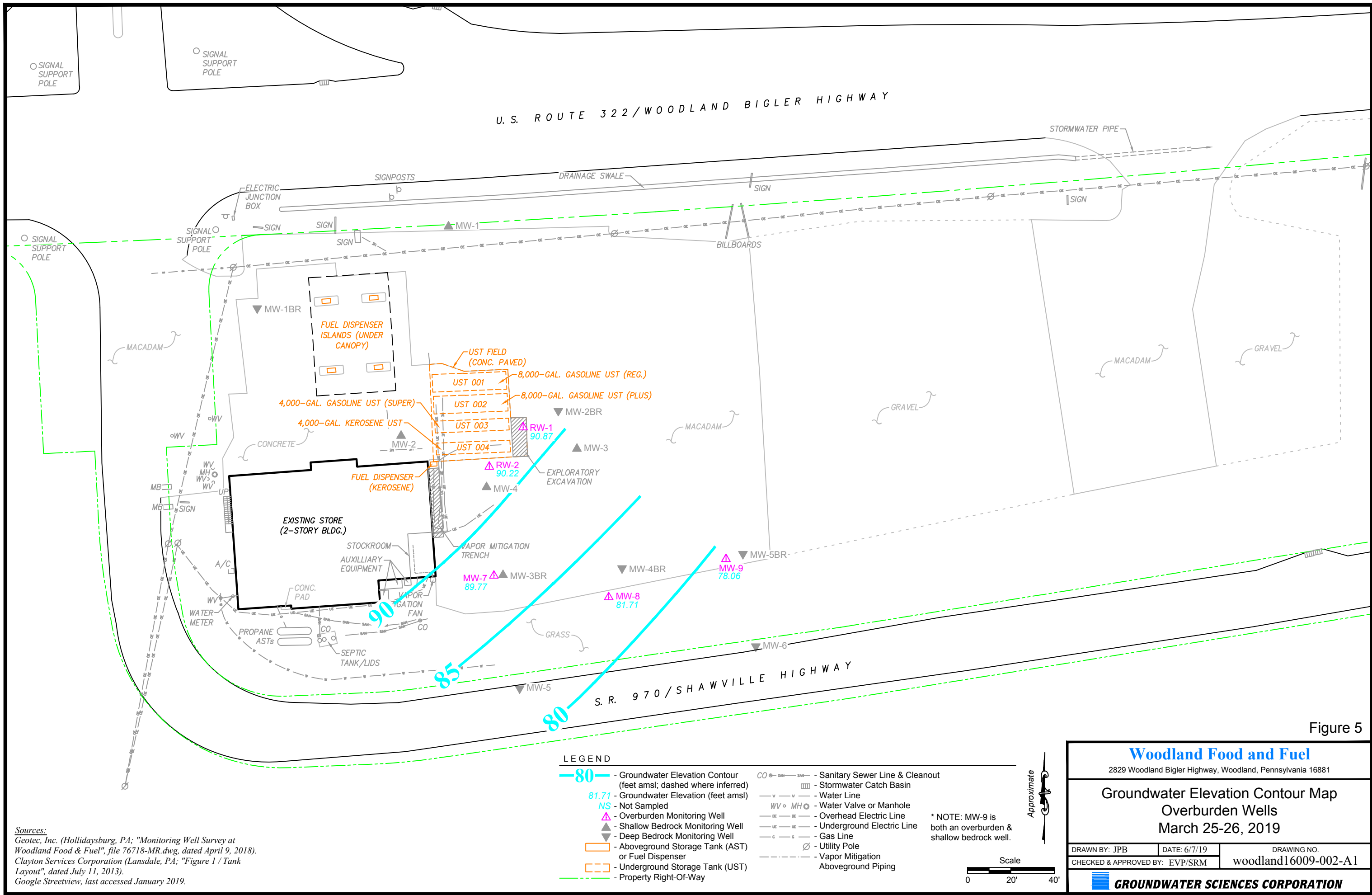












**Sources:**  
 Geotec, Inc. (Hollidaysburg, PA; "Monitoring Well Survey at Woodland Food & Fuel", file 76718-MR.dwg, dated April 9, 2018).  
 Clayton Services Corporation (Lansdale, PA; "Figure 1 / Tank Layout", dated July 11, 2013).  
 Google Streetview, last accessed January 2019.

**Woodland Food and Fuel**  
 2829 Woodland Bigler Highway, Woodland, Pennsylvania 16881

**Groundwater Elevation Contour Map**  
**Overburden Wells**  
 March 25-26, 2019

DRAWN BY: JPB	DATE: 6/7/19	DRAWING NO.
CHECKED & APPROVED BY: EVP/SRM	woodland16009-002-A1	

**GROUNDWATER SCIENCES CORPORATION**



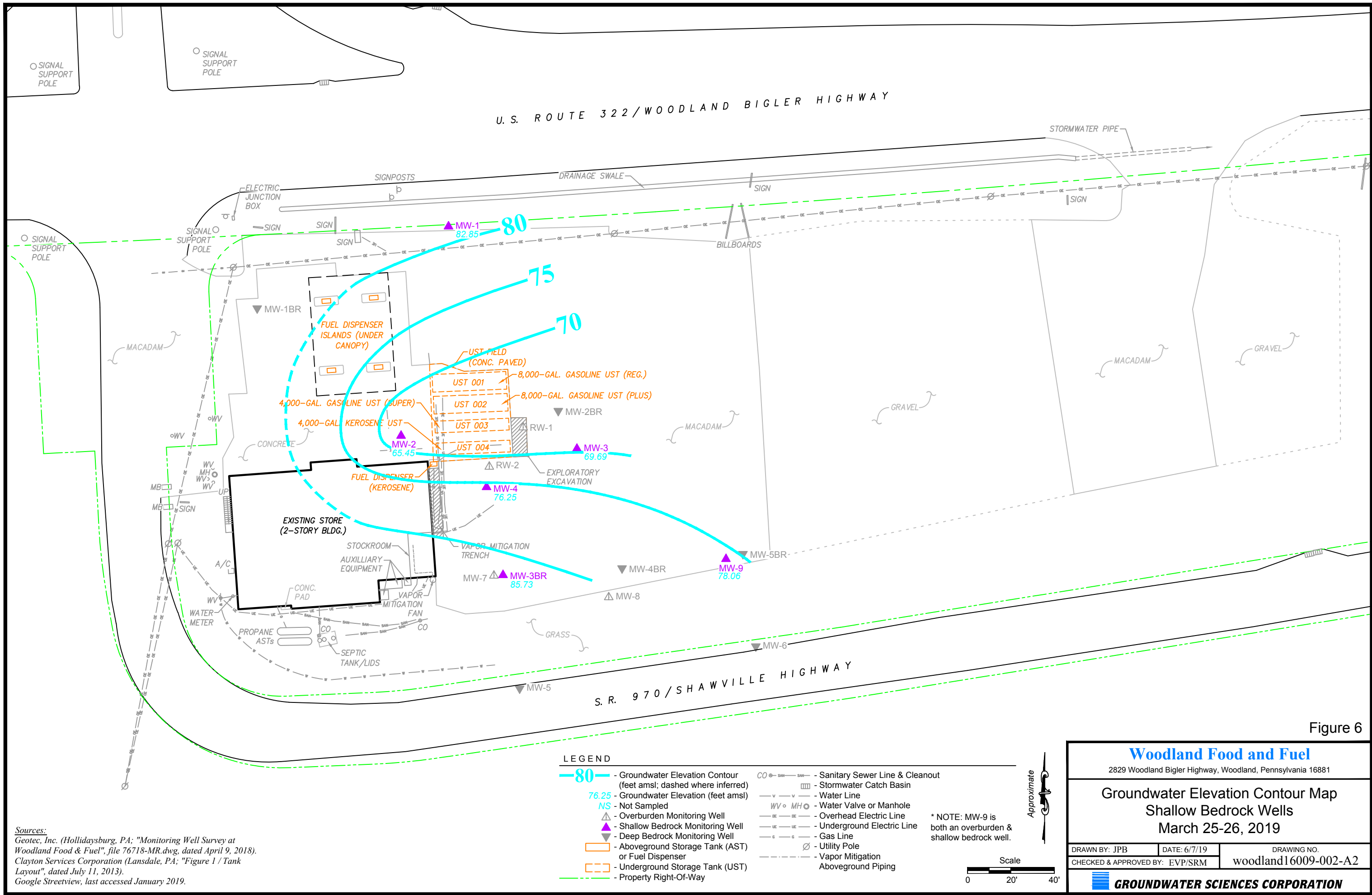


Figure 6

**Sources:**  
 Geotec, Inc. (Hollidaysburg, PA; "Monitoring Well Survey at Woodland Food & Fuel", file 76718-MR.dwg, dated April 9, 2018).  
 Clayton Services Corporation (Lansdale, PA; "Figure 1 / Tank Layout", dated July 11, 2013).  
 Google Streetview, last accessed January 2019.

**Woodland Food and Fuel**  
 2829 Woodland Bigler Highway, Woodland, Pennsylvania 16881

**Groundwater Elevation Contour Map**  
**Shallow Bedrock Wells**  
**March 25-26, 2019**

DRAWN BY: JPB    DATE: 6/7/19    DRAWING NO.  
 CHECKED & APPROVED BY: EVP/SRM    woodland16009-002-A2

**GROUNDWATER SCIENCES CORPORATION**



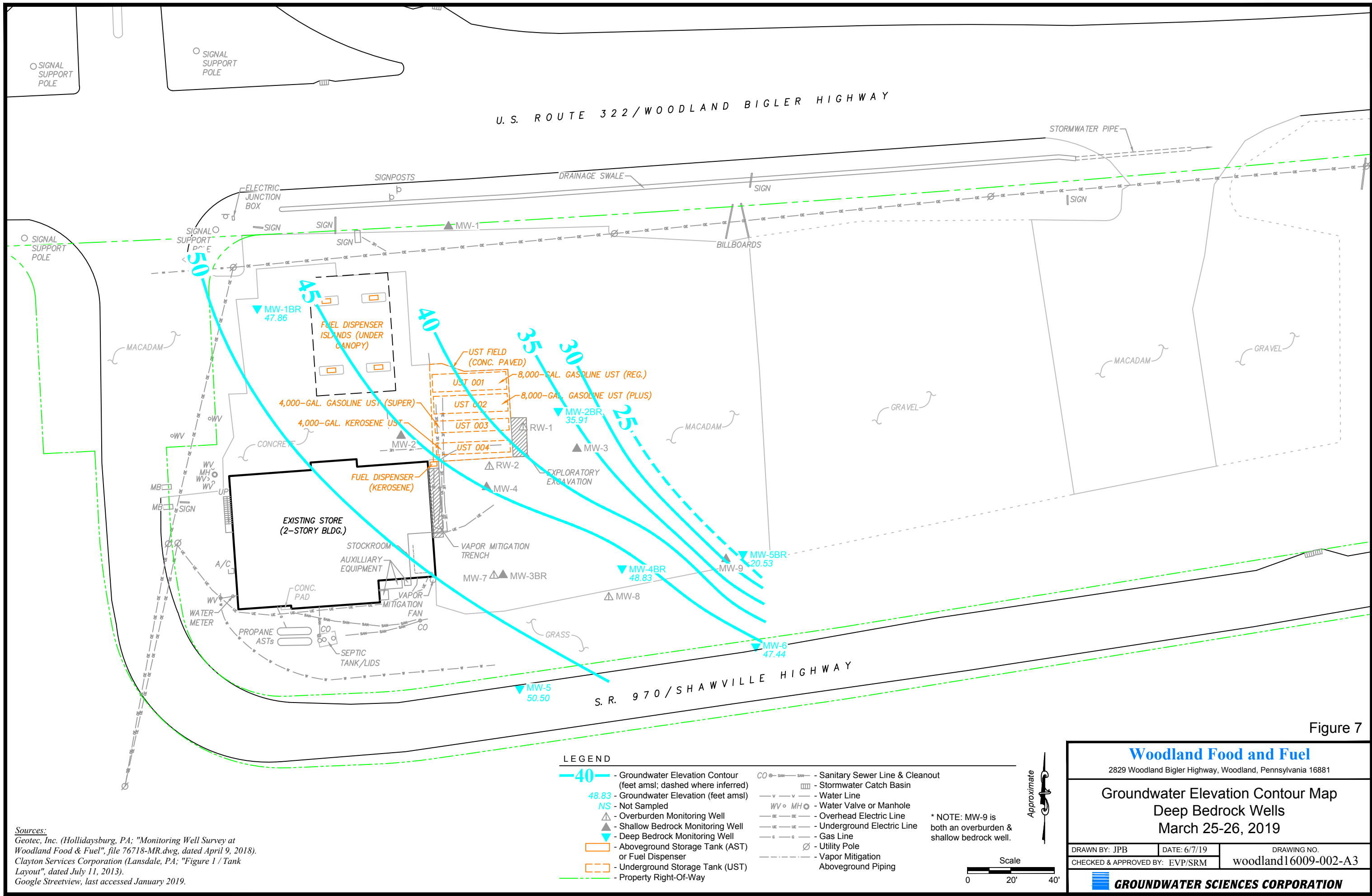


Figure 7

**Woodland Food and Fuel**  
 2829 Woodland Bigler Highway, Woodland, Pennsylvania 16881

**Groundwater Elevation Contour Map**  
**Deep Bedrock Wells**  
**March 25-26, 2019**

DRAWN BY: JPB    DATE: 6/7/19    DRAWING NO.  
 CHECKED & APPROVED BY: EVP/SRM    woodland16009-002-A3

**GROUNDWATER SCIENCES CORPORATION**



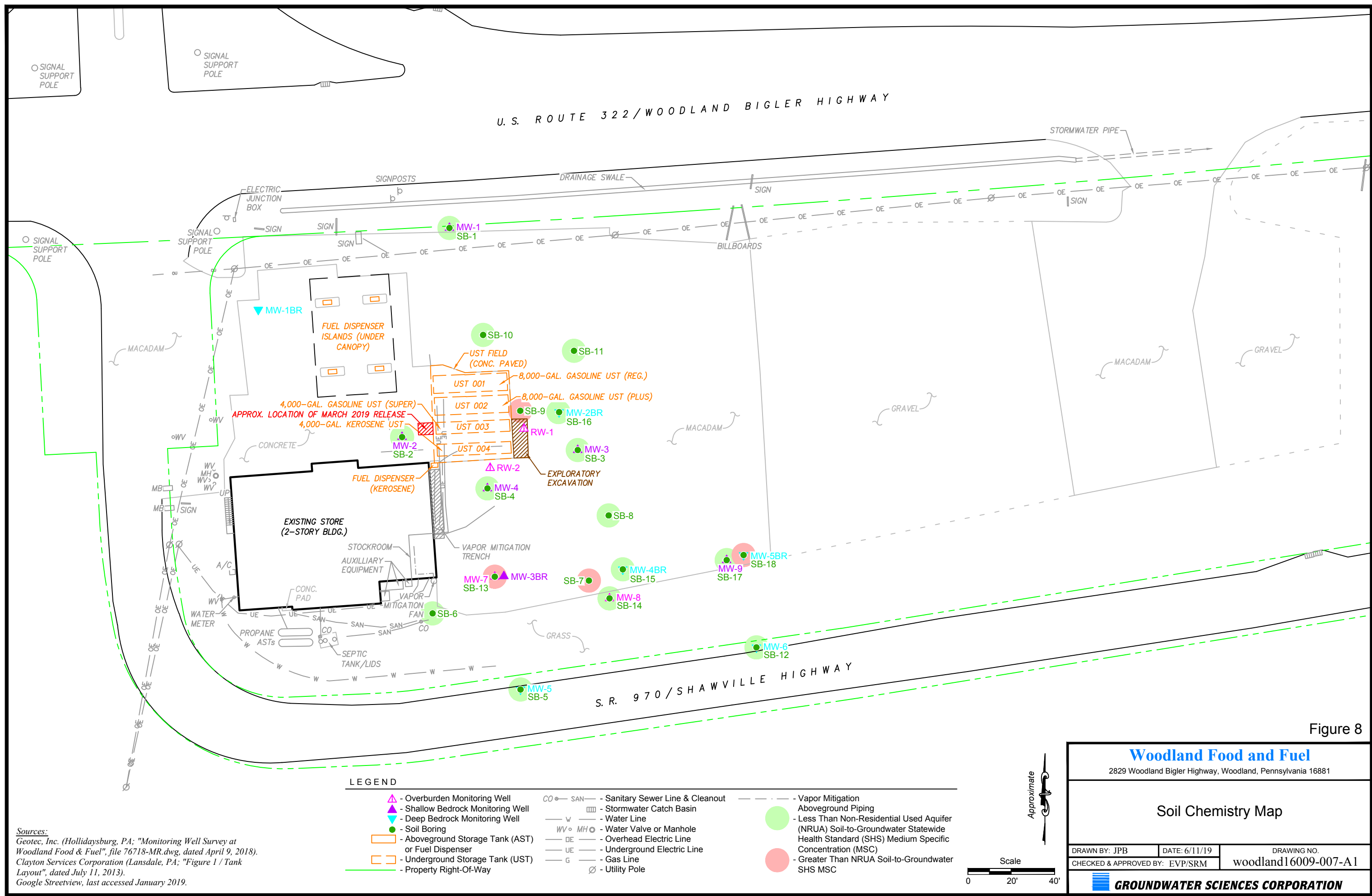


Figure 8

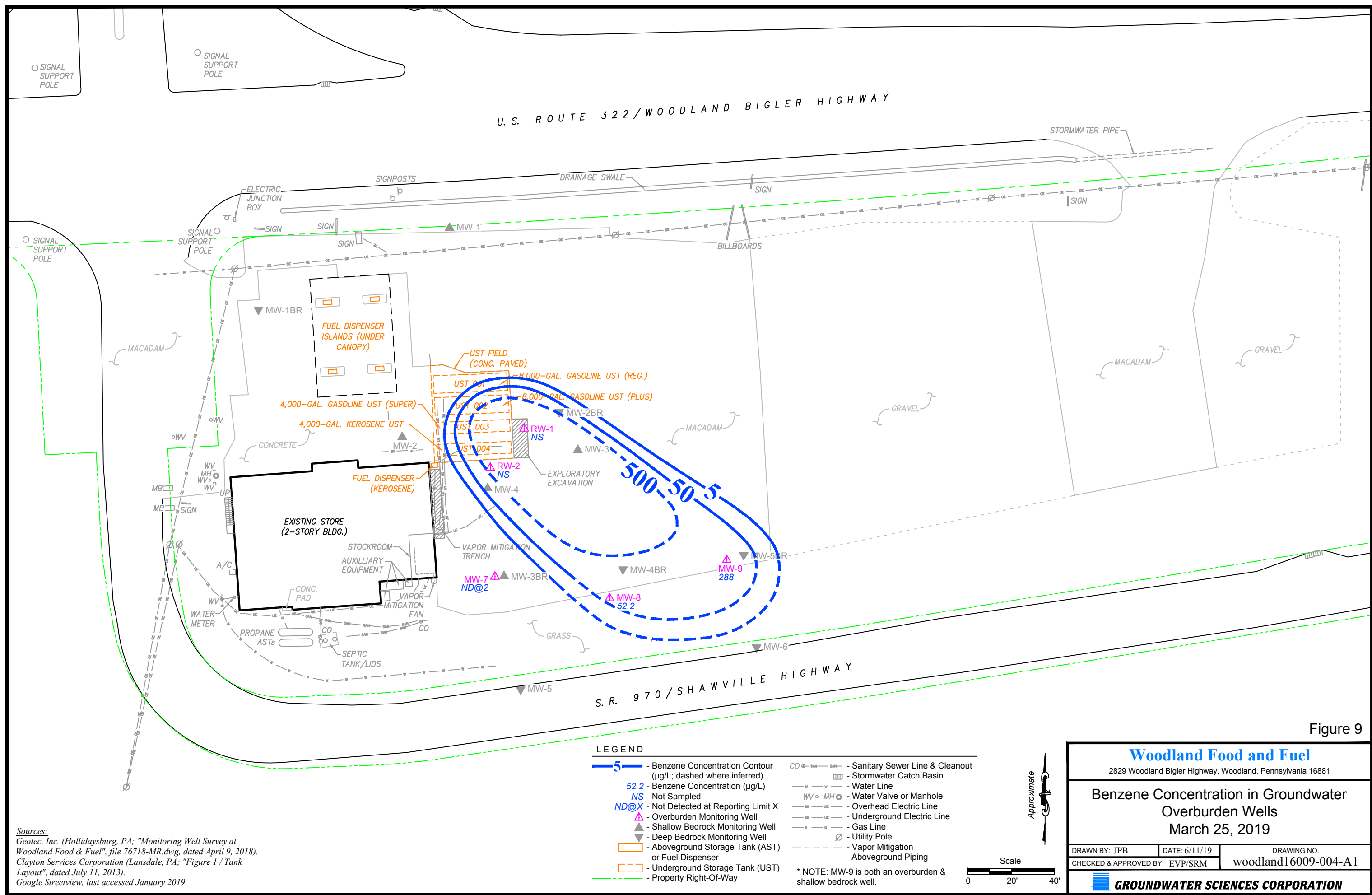
**Woodland Food and Fuel**  
 2829 Woodland Bigler Highway, Woodland, Pennsylvania 16881

**Soil Chemistry Map**

DRAWN BY: JPB    DATE: 6/11/19    DRAWING NO.  
 CHECKED & APPROVED BY: EVP/SRM    woodland16009-007-A1

**GROUNDWATER SCIENCES CORPORATION**







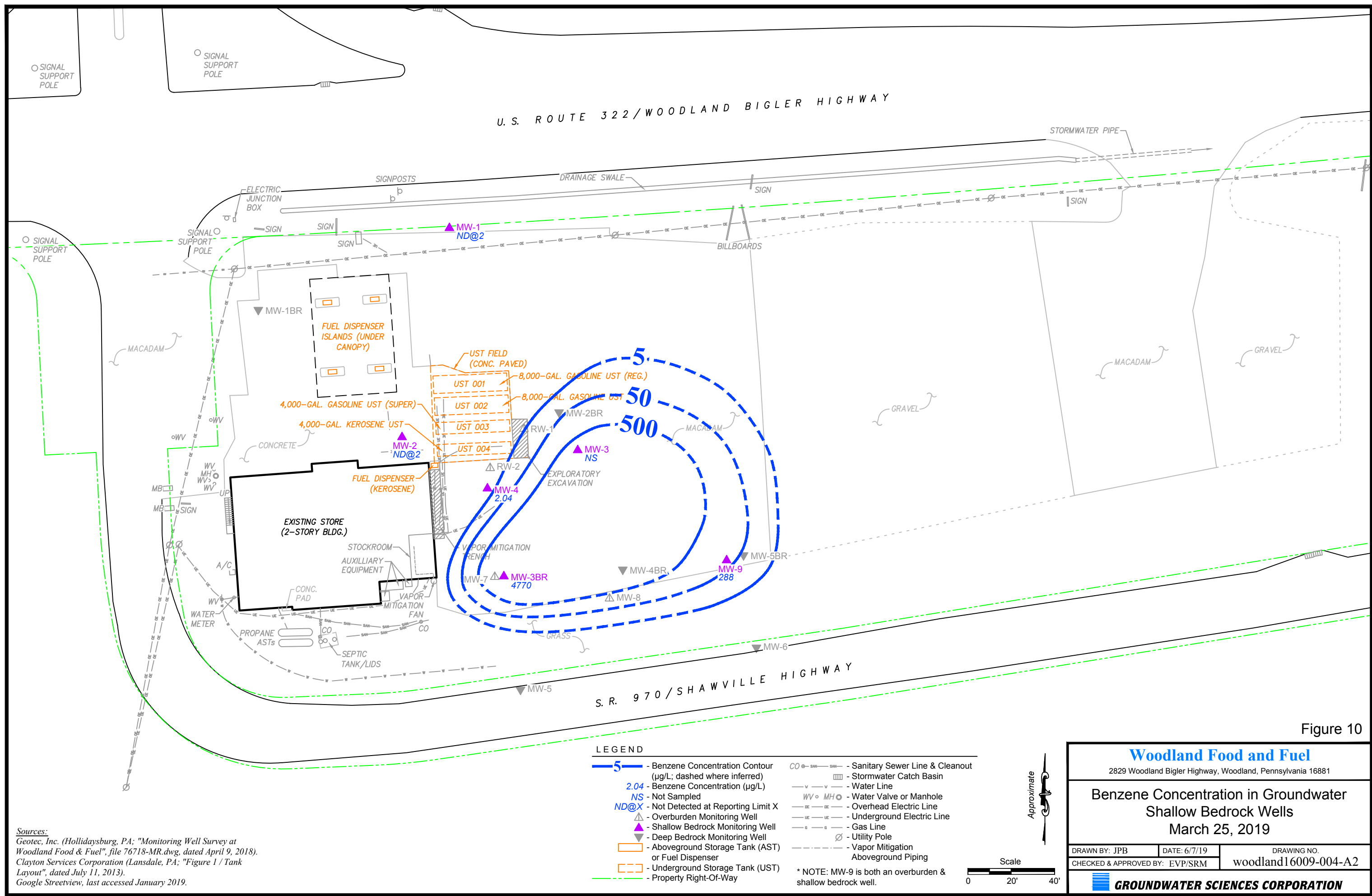
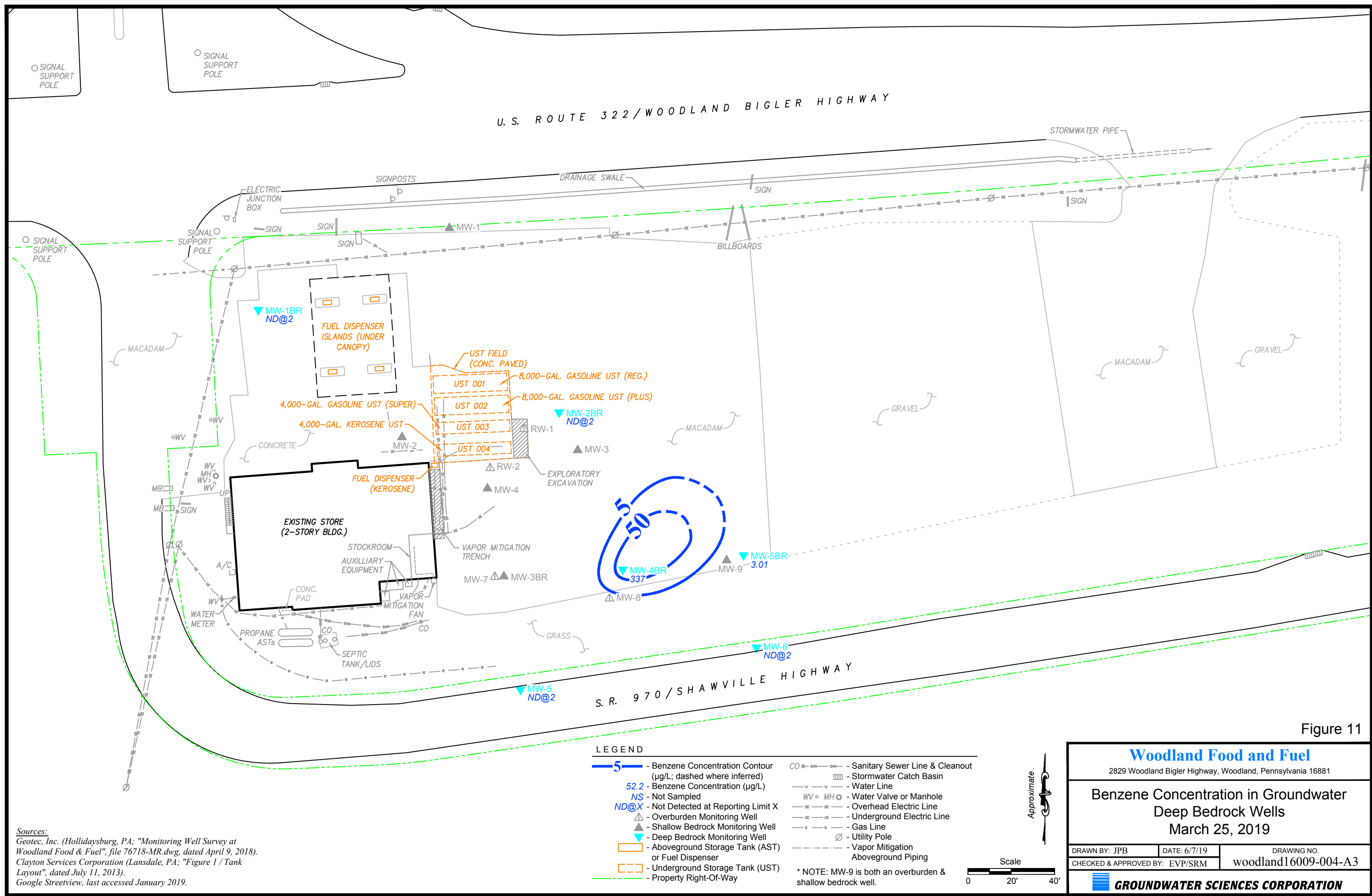


Figure 10





**Sources:**  
 Geotec, Inc. (Hollidaysburg, PA; "Monitoring Well Survey at Woodland Food & Fuel", file 76718-MR.dwg, dated April 9, 2018).  
 Clayton Services Corporation (Lansdale, PA; "Figure 1 / Tank Layout", dated July 11, 2013).  
 Google Streetview, last accessed January 2019.

Figure 11

**Woodland Food and Fuel**  
 2829 Woodland Bigler Highway, Woodland, Pennsylvania 16881

**Benzene Concentration in Groundwater  
 Deep Bedrock Wells  
 March 25, 2019**

DRAWN BY: JPB	DATE: 6/7/19	DRAWING NO.
CHECKED & APPROVED BY: EVP/SRM	woodland16009-004-A3	

**GROUNDWATER SCIENCES CORPORATION**

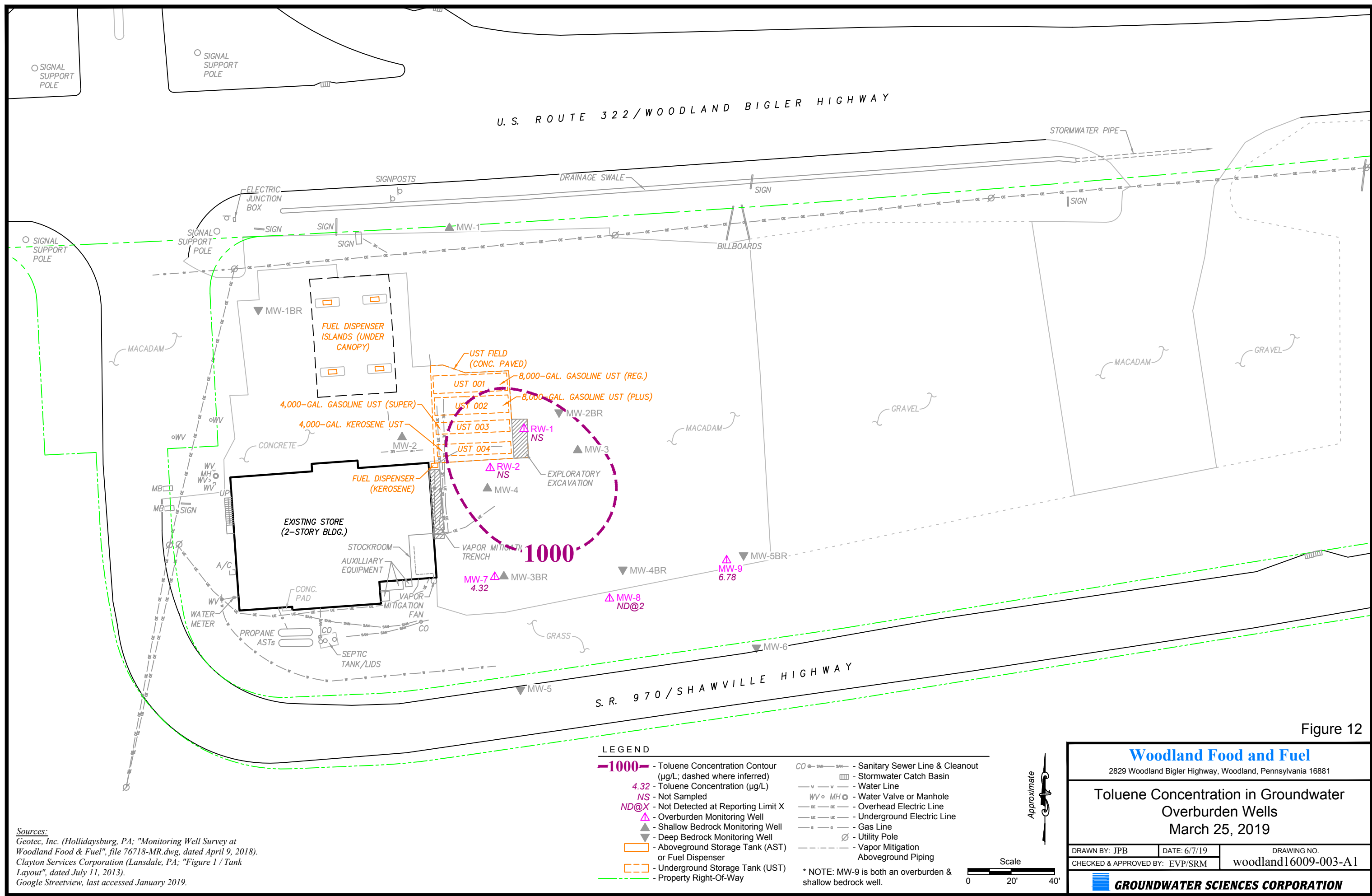


Figure 12

Sources:  
Geotec, Inc. (Hollidaysburg, PA; "Monitoring Well Survey at Woodland Food & Fuel", file 76718-MR.dwg, dated April 9, 2018).  
Clayton Services Corporation (Lansdale, PA; "Figure 1 / Tank Layout", dated July 11, 2013).  
Google Streetview, last accessed January 2019.



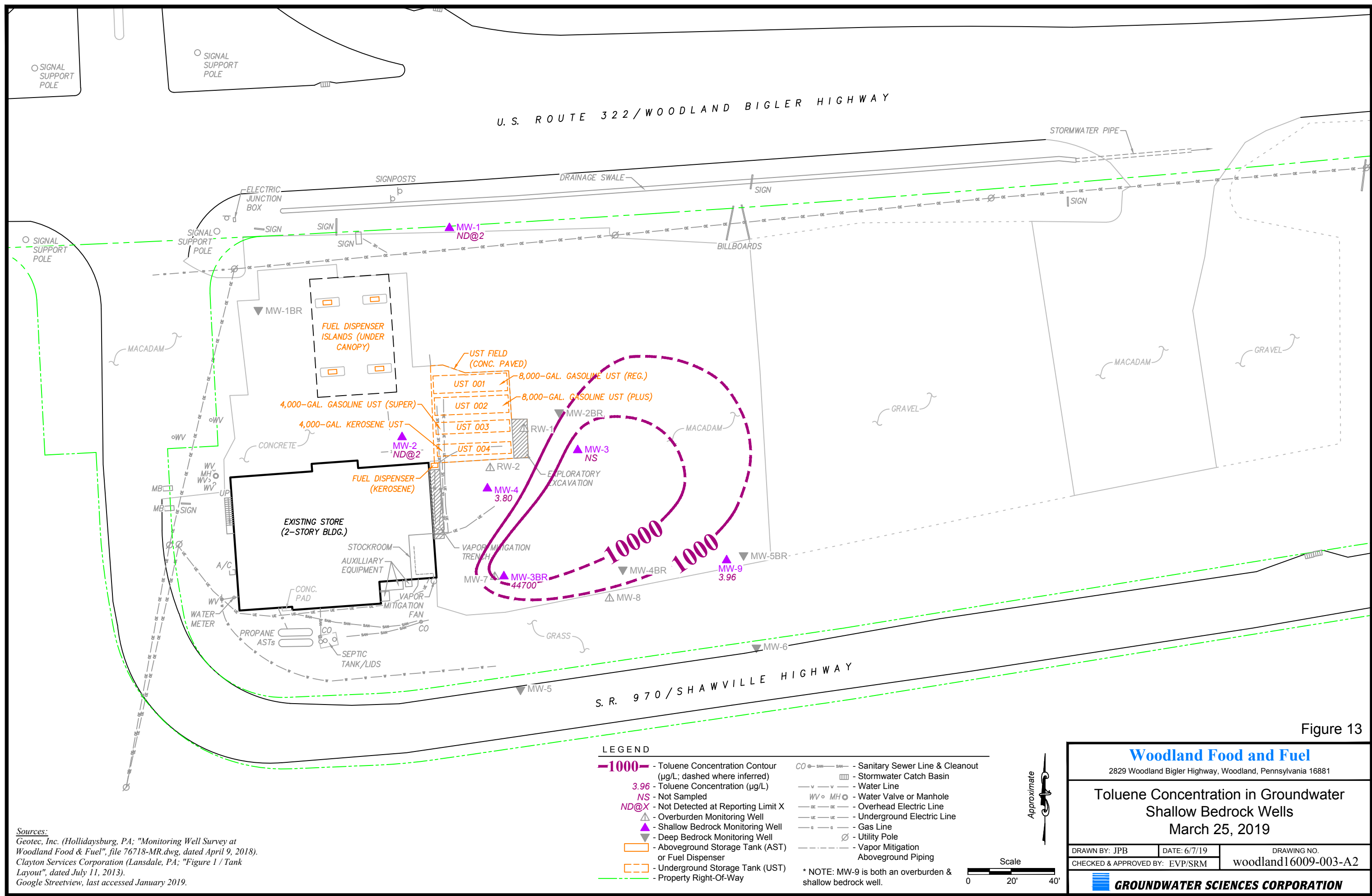


Figure 13

Sources:  
 Geotec, Inc. (Hollidaysburg, PA; "Monitoring Well Survey at Woodland Food & Fuel", file 76718-MR.dwg, dated April 9, 2018).  
 Clayton Services Corporation (Lansdale, PA; "Figure 1 / Tank Layout", dated July 11, 2013).  
 Google Streetview, last accessed January 2019.

**Woodland Food and Fuel**  
 2829 Woodland Bigler Highway, Woodland, Pennsylvania 16881

**Toluene Concentration in Groundwater  
 Shallow Bedrock Wells  
 March 25, 2019**

DRAWN BY: JPB	DATE: 6/7/19	DRAWING NO.
CHECKED & APPROVED BY: EVP/SRM	woodland16009-003-A2	

**GROUNDWATER SCIENCES CORPORATION**

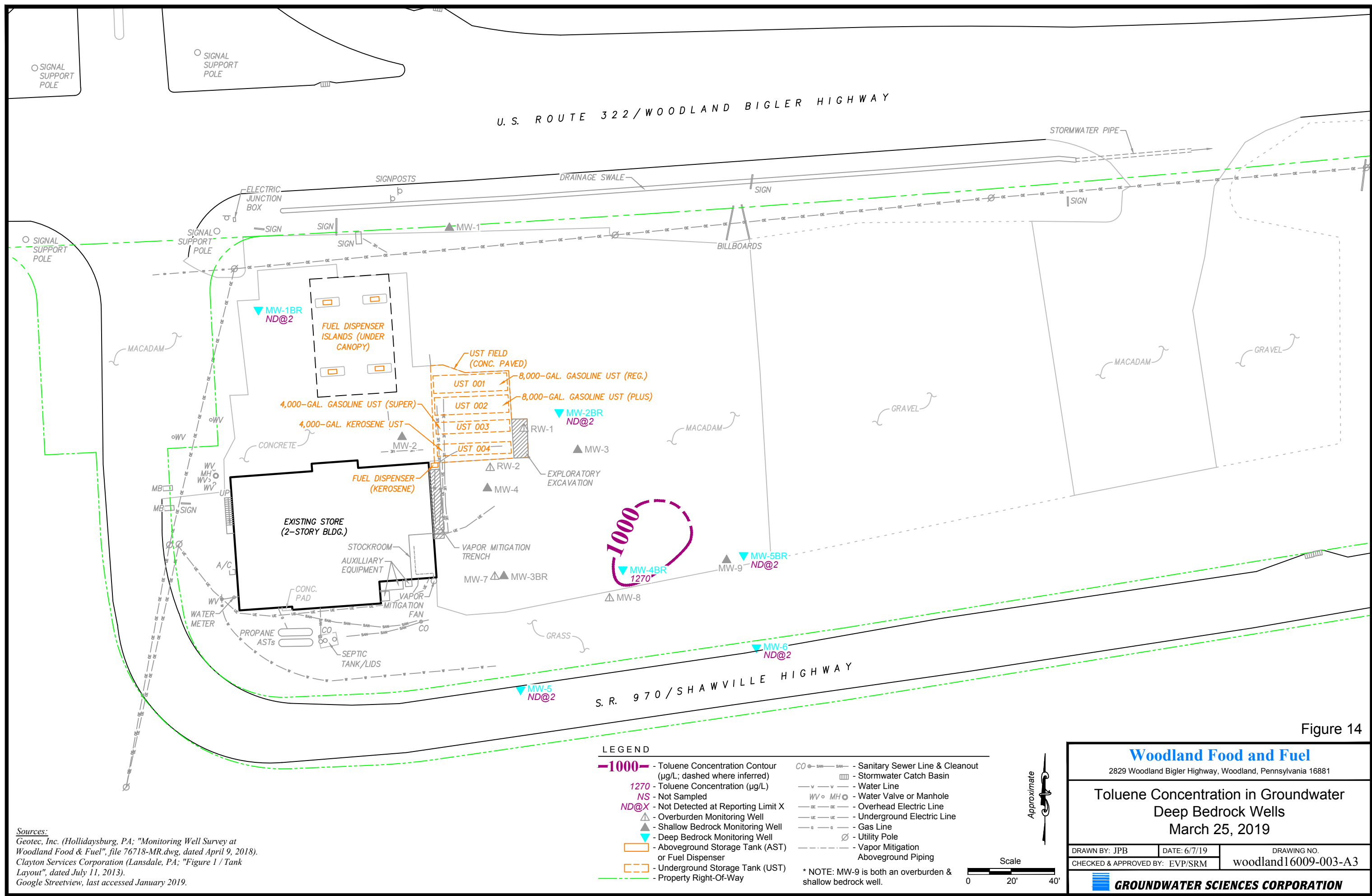
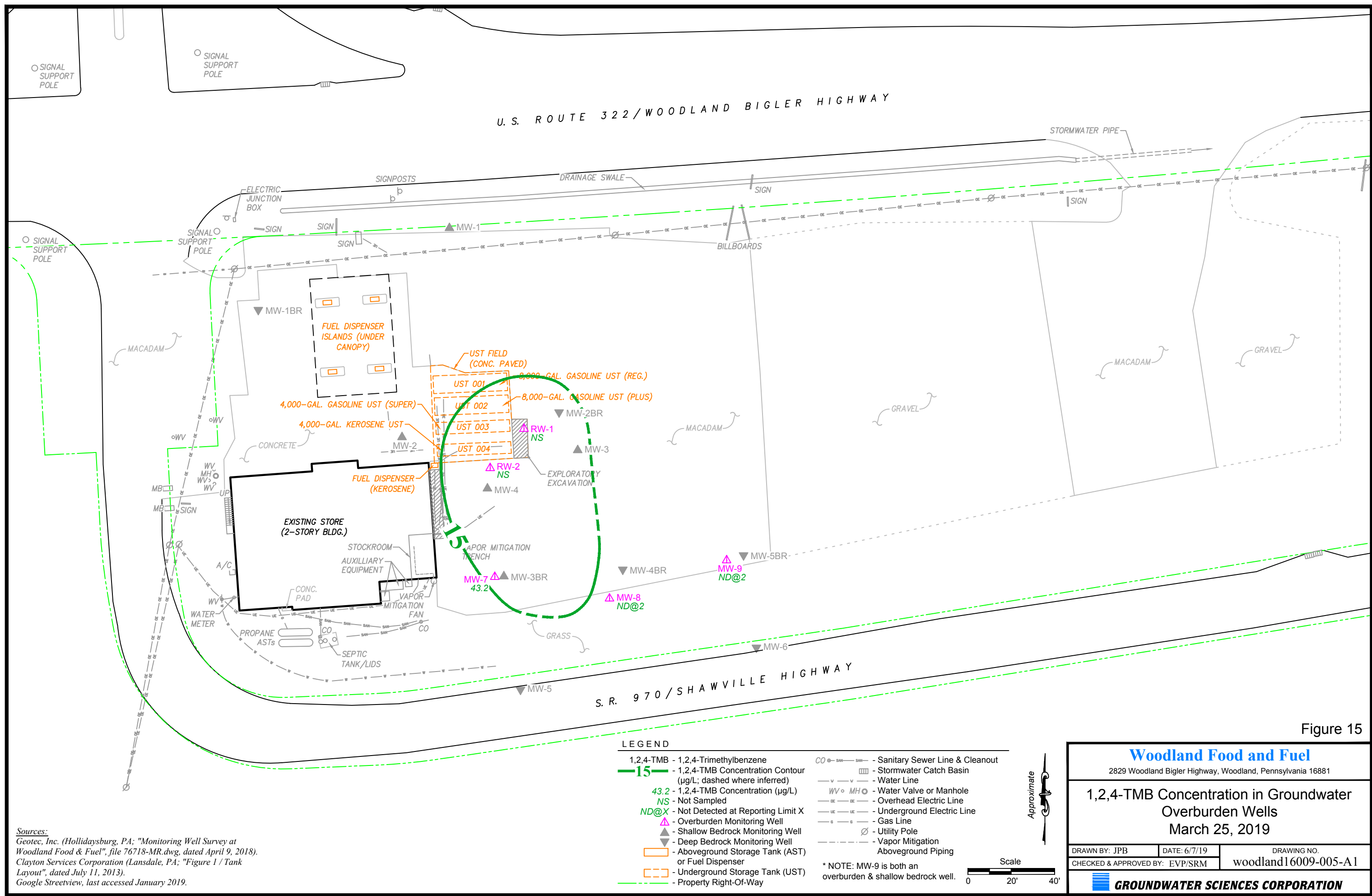


Figure 14

**Sources:**  
Geotec, Inc. (Hollidaysburg, PA; "Monitoring Well Survey at Woodland Food & Fuel", file 76718-MR.dwg, dated April 9, 2018).  
Clayton Services Corporation (Lansdale, PA; "Figure 1 / Tank Layout", dated July 11, 2013).  
Google Streetview, last accessed January 2019.





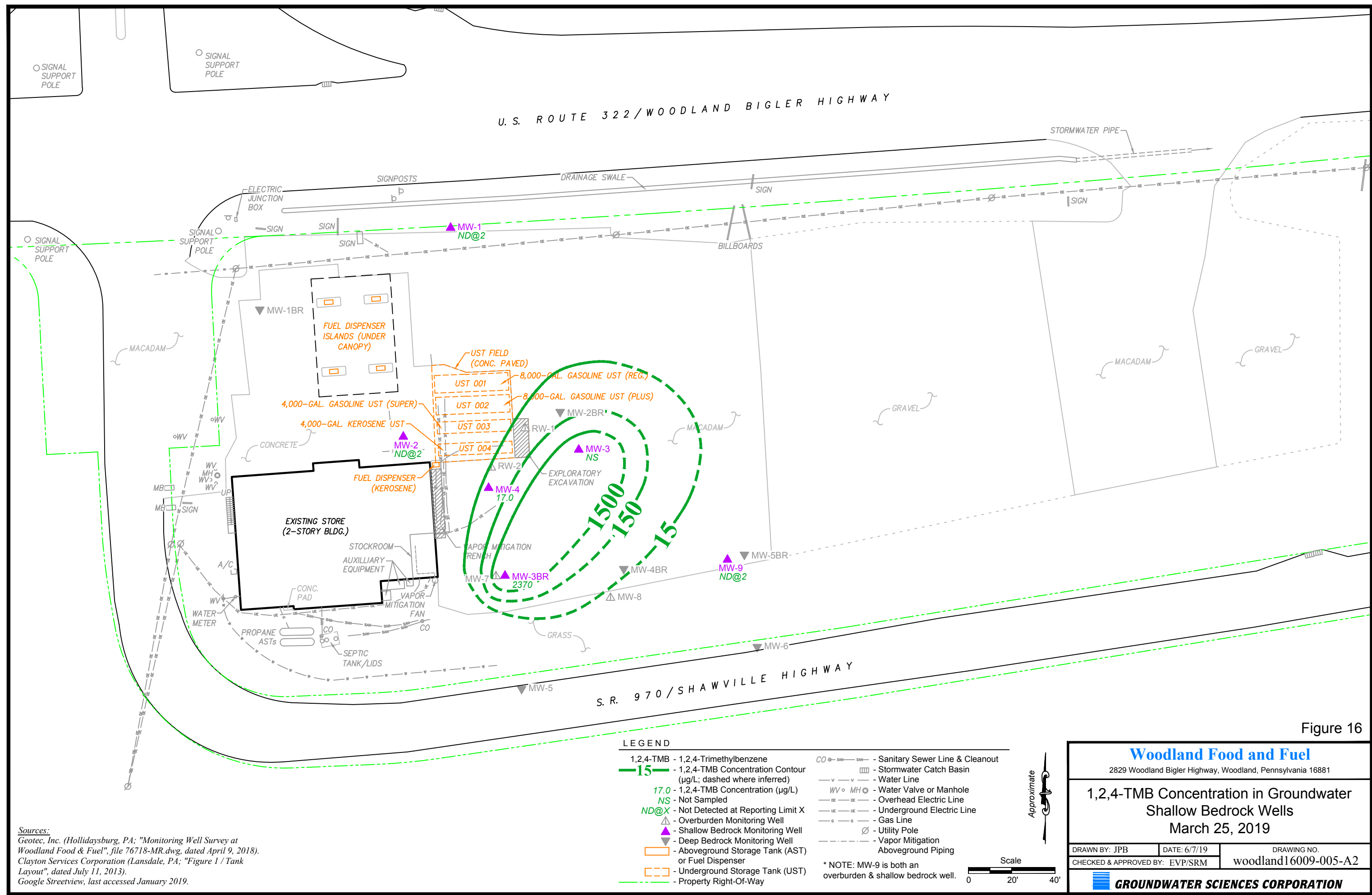
**Sources:**  
 Geotec, Inc. (Hollidaysburg, PA; "Monitoring Well Survey at Woodland Food & Fuel", file 76718-MR.dwg, dated April 9, 2018).  
 Clayton Services Corporation (Lansdale, PA; "Figure 1 / Tank Layout", dated July 11, 2013).  
 Google Streetview, last accessed January 2019.

**Woodland Food and Fuel**  
 2829 Woodland Bigler Highway, Woodland, Pennsylvania 16881

**1,2,4-TMB Concentration in Groundwater Overburden Wells**  
 March 25, 2019

DRAWN BY: JPB	DATE: 6/7/19	DRAWING NO.
CHECKED & APPROVED BY: EVP/SRM	woodland16009-005-A1	

**GROUNDWATER SCIENCES CORPORATION**



**Sources:**  
 Geotec, Inc. (Hollidaysburg, PA; "Monitoring Well Survey at Woodland Food & Fuel", file 76718-MR.dwg, dated April 9, 2018).  
 Clayton Services Corporation (Lansdale, PA; "Figure 1 / Tank Layout", dated July 11, 2013).  
 Google Streetview, last accessed January 2019.

Figure 16

**Woodland Food and Fuel**  
 2829 Woodland Bigler Highway, Woodland, Pennsylvania 16881

**1,2,4-TMB Concentration in Groundwater**  
**Shallow Bedrock Wells**  
**March 25, 2019**

DRAWN BY: JPB	DATE: 6/7/19	DRAWING NO.
CHECKED & APPROVED BY: EVP/SRM	woodland16009-005-A2	

**GROUNDWATER SCIENCES CORPORATION**



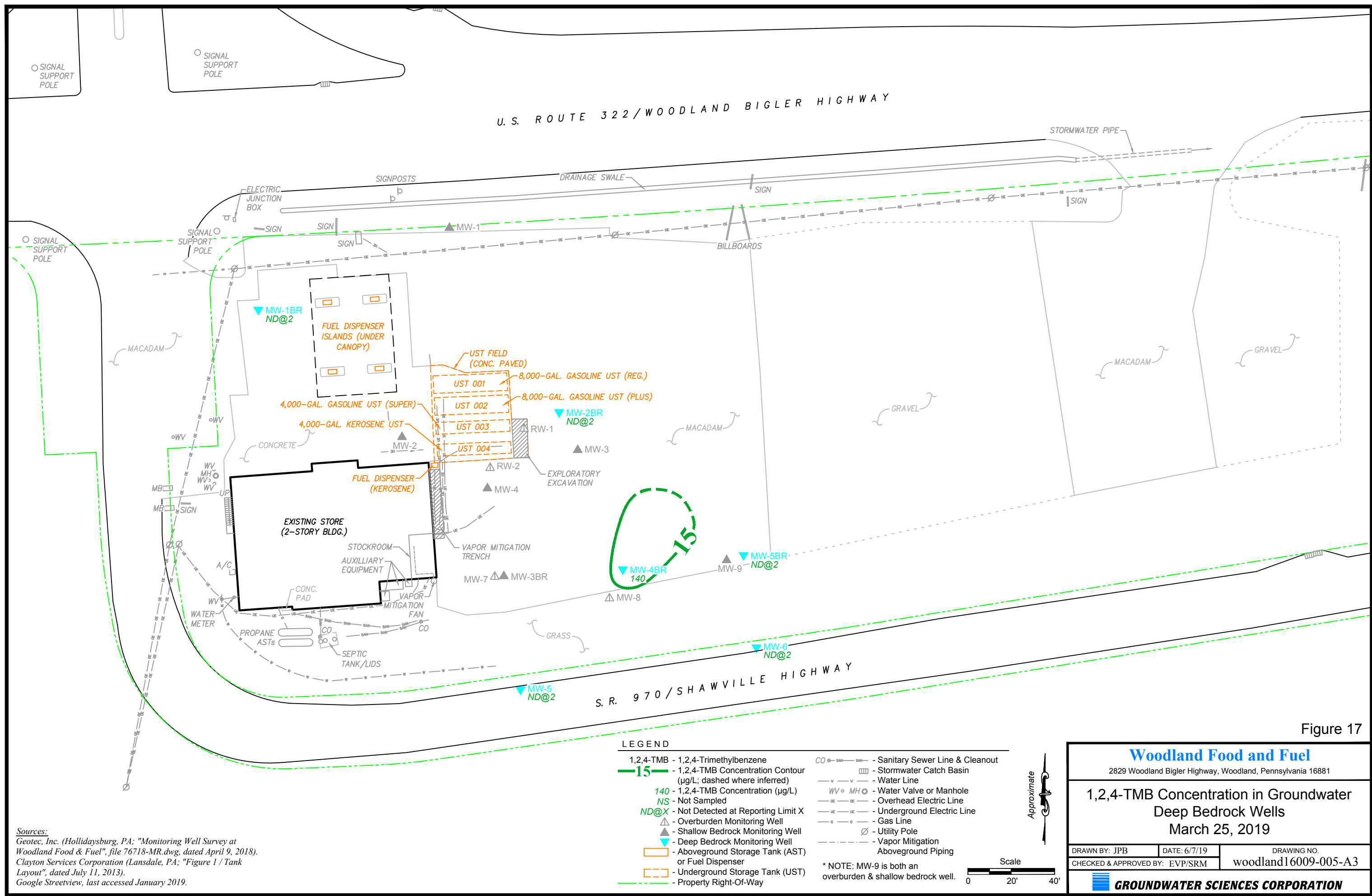
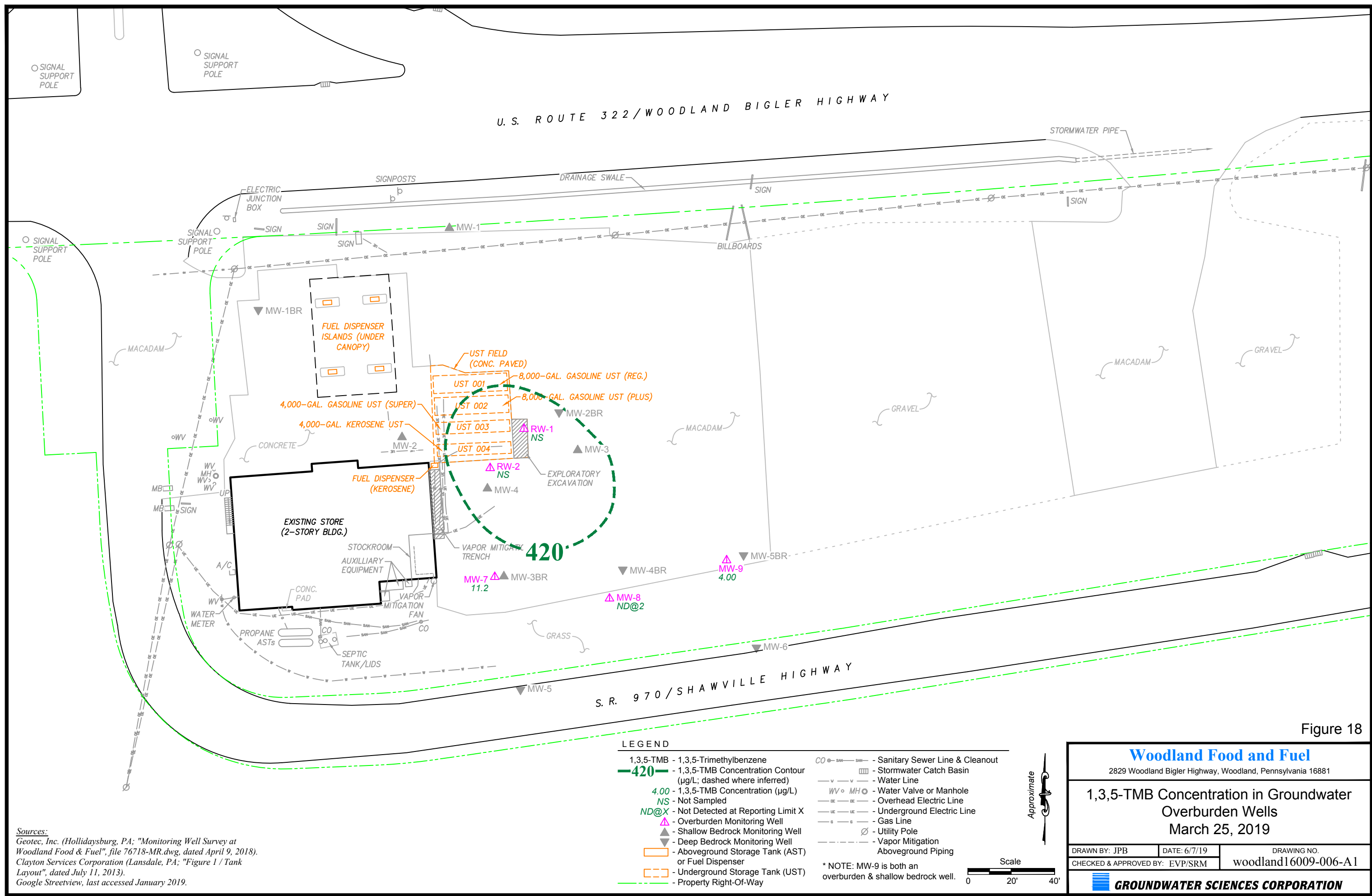
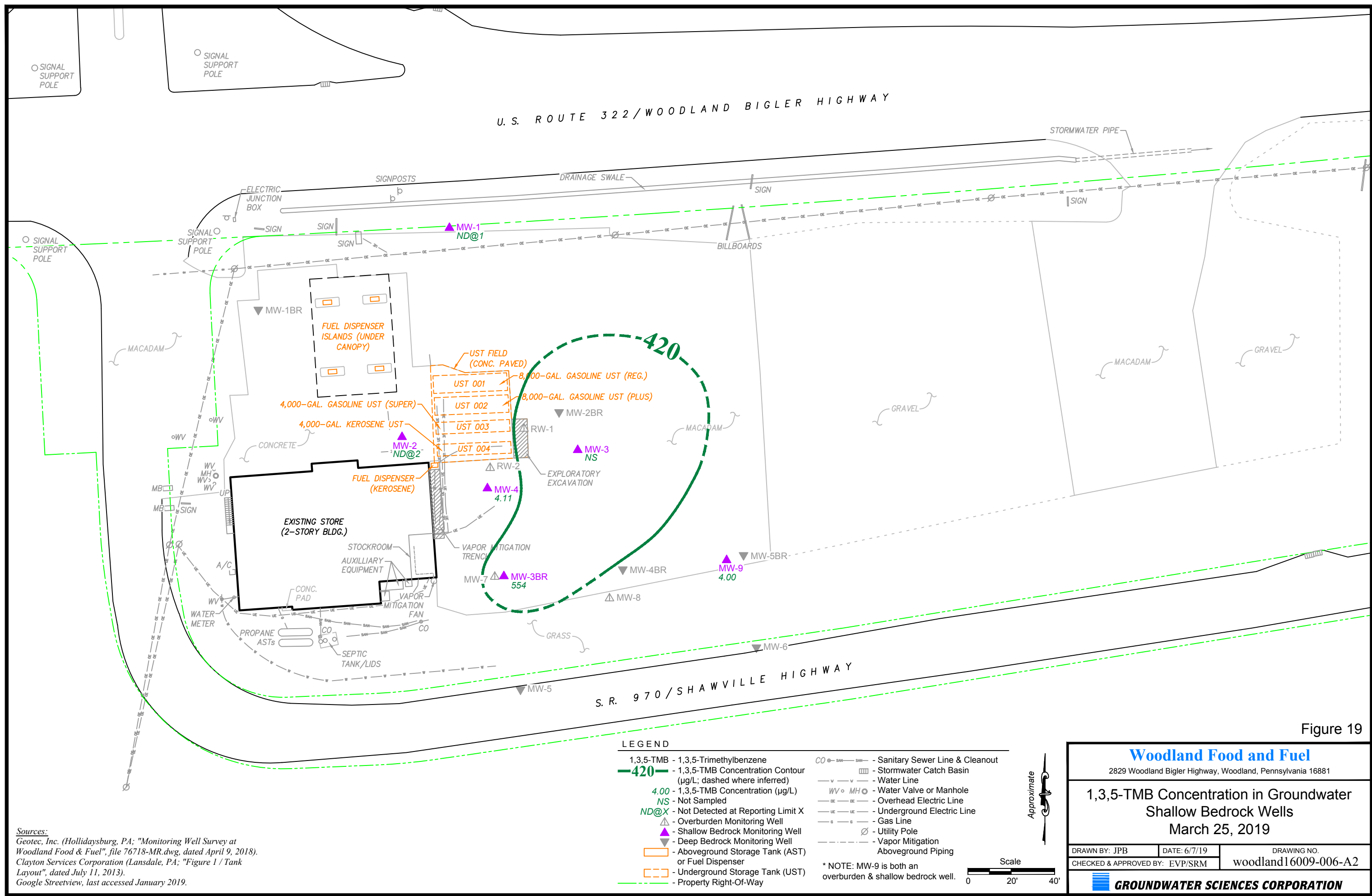
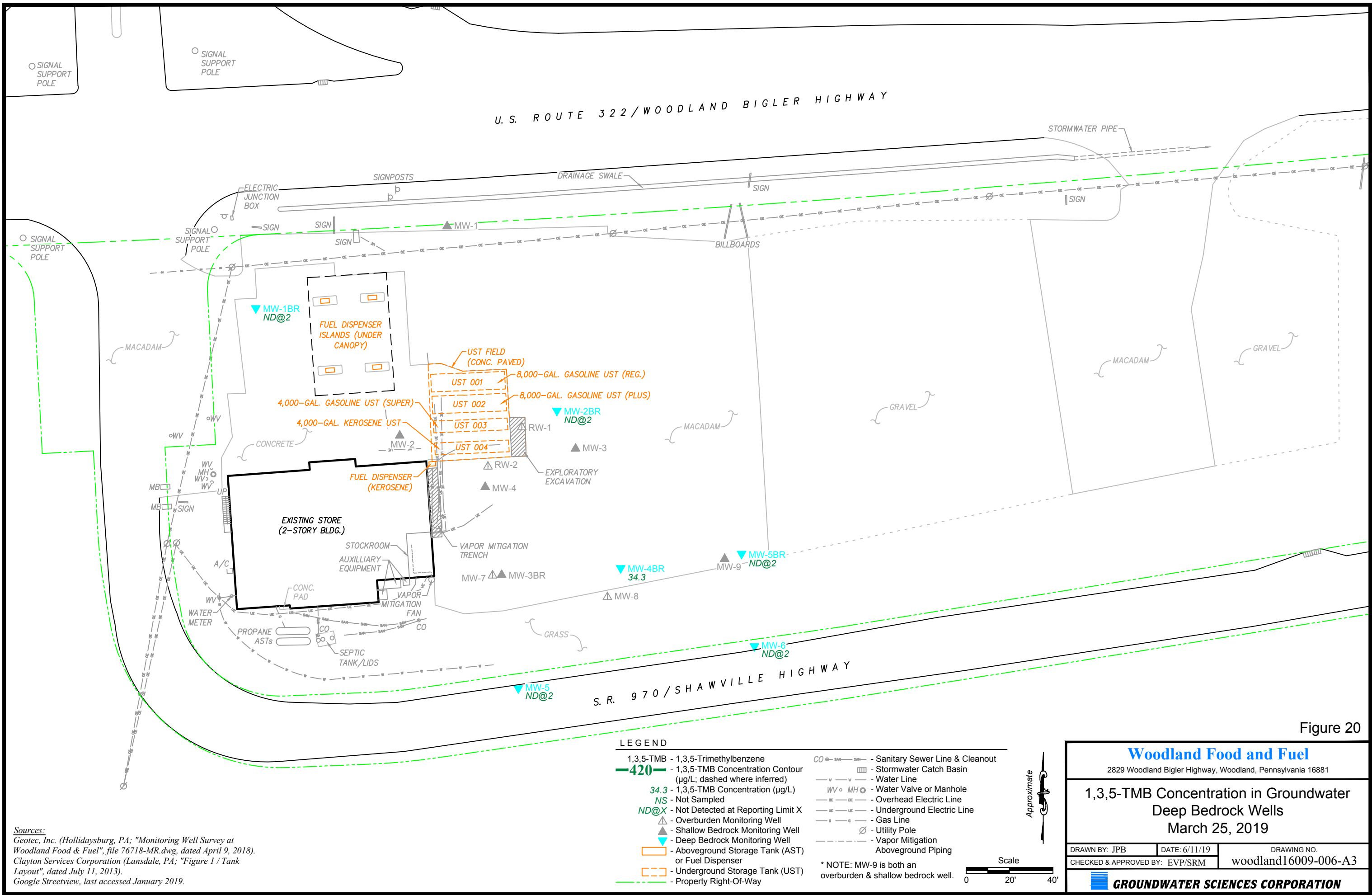


Figure 17









Sources:  
Geotec, Inc. (Hollidaysburg, PA; "Monitoring Well Survey at Woodland Food & Fuel", file 76718-MR.dwg, dated April 9, 2018).  
Clayton Services Corporation (Lansdale, PA; "Figure 1 / Tank Layout", dated July 11, 2013).  
Google Streetview, last accessed January 2019.



